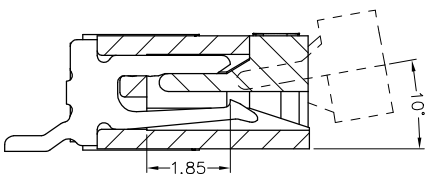
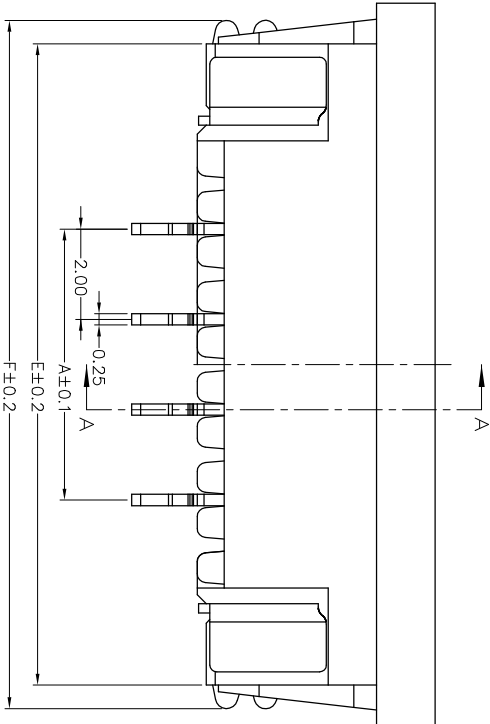
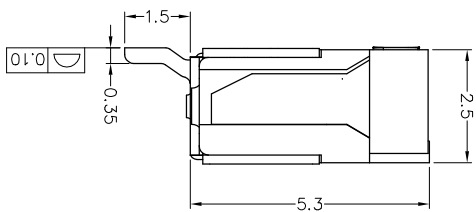
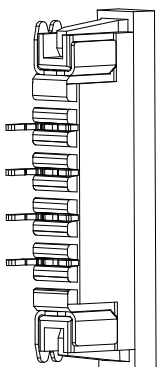
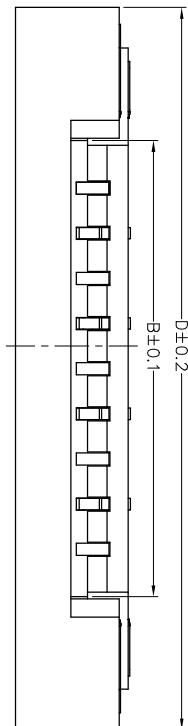
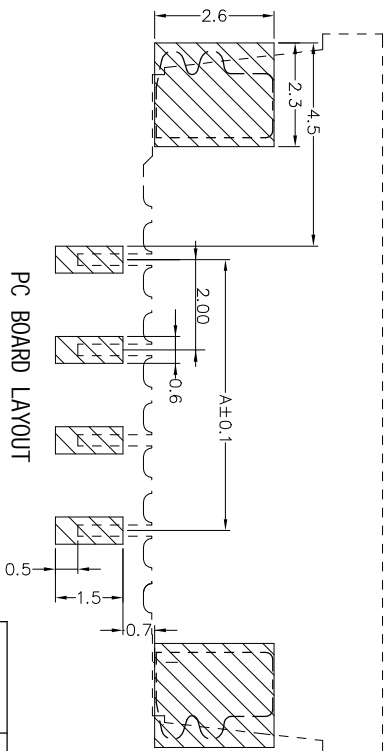


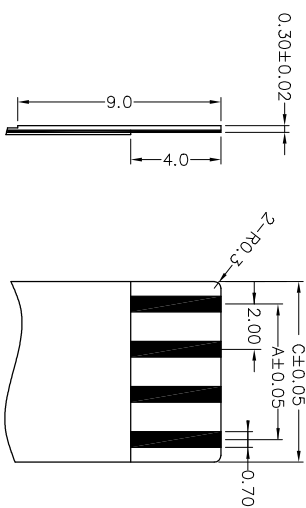
2.0mm PITCH FPC CONNECTORS



PIN	DIM. A	DIM. B	DIM. C	DIM. D	DIM. E	DIM. F
4	6.00	10.10	10.00	16.00	14.20	15.30
5	8.00	12.10	12.00	18.00	16.20	17.30
6	10.00	14.10	14.00	20.00	18.20	19.30
7	12.00	16.10	16.00	22.00	20.20	21.30
8	14.00	18.10	18.00	24.00	22.20	23.30
9	16.00	20.10	20.00	26.00	24.20	25.30
10	18.00	22.10	22.00	28.00	26.20	27.30
11	20.00	24.10	24.00	30.00	28.20	29.30
12	22.00	26.10	26.00	32.00	30.20	31.30
13	24.00	28.10	28.00	34.00	32.20	33.30
14	26.00	30.10	30.00	36.00	34.20	35.30
15	28.00	32.10	32.00	38.00	36.20	37.30
16	30.00	34.10	34.00	40.00	38.20	39.30
17	32.00	36.10	36.00	42.00	40.20	41.30



PROPER CABLE (SCALE 2:1)



技术要求(Technical Index):

1. 材质与表面处理(Material And Finish):
基座 (Housing) : LCP UL94V-0 Black;
盖子 (Cover) : LCP UL94V-0 Black;
端子 (Terminal) : Phosphor Copper Sn Plated;
焊片 (Solder) : Copper Alloy Sn Plated;
2. 工作温度(Temperature range): -25° C~+85° C.
3. 额定电压(Rated voltage): 50V, AC/DC.
4. 额定电流: 0.5A, AC/DC.
5. 接触电阻(Contact resistance): ≤20mΩ.
6. 绝缘电阻(Insulation resistance): ≥800MΩ.
7. 耐电压(Voltage withstanding): 200V AC/minute.

DESIGN:	Jemply	
CHECK:	Ke Tian	
APPROVED:	Youquan Xu	
DIM	TOL	DIM TOL
X	±0.25	X
X.X	±0.20	X.X
X.XX	±0.15	X.XX
X.XXX		X.XXX

TITLE: **WYCON®** 深圳市启威源电子有限公司
SHENZHEN QIWEIYUAN ELECTRONIC CO., LTD.

PART NO. **2.0K-FX-PM3-*****

REV. A SCALE: N/A UNIT: mm SHEET: 1/1