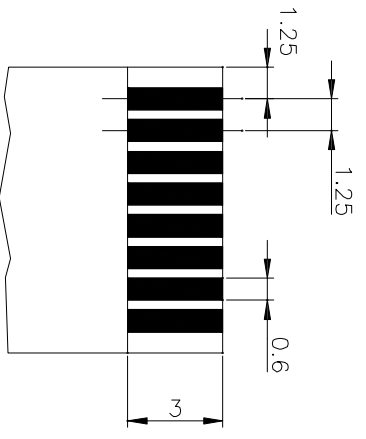
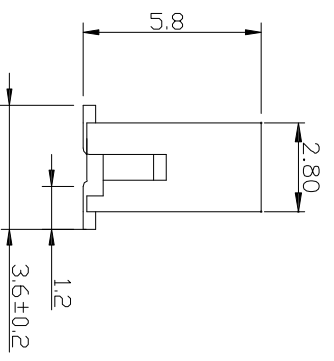
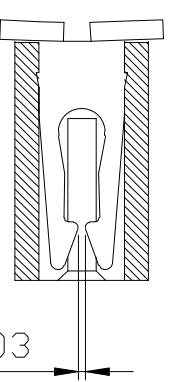


PC BOARD LAYOUT
TOP VIEW
PCB T=1.6mm



FFC/FPC DIMENSION
THICKNESS 0.26~0.32mm
TOLERANCE: 0.05mm



Q-Q SECTION

NOTES

- 1.MATERIAL:
NYLON
- CONTACT: PHOSPHOR BRONZE
- 2.PLATING: 1.TIN 120 μ " MIN
OVER NICKEL 50 μ ".
- 3.PACKING: REEL
- 4.DIM A=1.25mm*(CKT-1)
DIM B=DIM A+2.3mm
DIM C=DIM A+4mm
- G. LEAD-FREE

UNITS mm	MATL	FINISH	QTY	PCS
X \pm 0.3	X \pm 2'	X \pm 5'		
X \pm 0.25	X \pm 2'	X \pm 2'		
XX \pm 0.20	XX \pm 1'	XX \pm 1'		
XXX \pm 0.10	XXX \pm 0.5'	XXX \pm 0.5'		
PART NO.(INTENDED USE) 1.25-B-nPB		TITLE: 1.25双面接立贴HPC连接器		
APPD: CHKD:		DWG NO.: 1.25-B-nPB		
DR: HU 2016.09.28		SCALE	SHEET	REV.
		1/1	1/1	A

QWYCONN 深圳市启威源电子有限公司
SHENZHEN QIWELIYUAN ELECTRONIC CO., LTD.