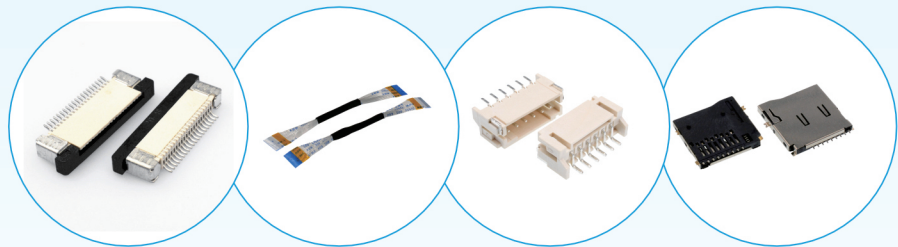




广东国连电子有限公司

GUANGDONG GUOLIAN ELECTRONICS CO., LTD



专业精密连接器生产厂家

企业公司简介

广东国连电子有限公司专注于电子连接器、电子线缆等产品的生产开发,公司从产品的模具开发、生产到销售给客户一站式服务解决方案,为全球消费电子、通信、汽车电子、安防监控、医疗设备、AI工业等行业客户提供高质量产品及优质服务。

一直以来公司不断提升智能化发展,作为电子行业的创新力量,为产业发展提供无限的想象空间,服务国家战略,打造科创品牌,旗下拥有深圳市德瑞电子有限公司和深圳市崴源电子有限公司两大子公司,在多方合力下,实现高效联动,可以为广大客户提供有力的产品和服务保障。

公司秉承“给客户创造价值、给员工创造平台、合作共赢”的经营理念,致力打造中国精密连接器行业的标杆品牌。

Guangdong Guolian Electronics Co., Ltd. focuses on the production and development of electronic connectors, electronic cables, and other products. The company provides one-stop service solutions from mold development, production, to sales to customers, providing high-quality products and services for global consumer electronics, communication, automotive electronics, security monitoring, medical equipment, AI industry and other industries.

The company has been continuously improving its intelligent development. As an innovative force in the electronics industry, it provides unlimited imagination space for industrial development, serves national strategies, and creates a science and technology innovation brand. It has two subsidiaries, Shenzhen Derui Electronics Co., Ltd. and Shenzhen Weiyan Electronics Co., Ltd., which work together to achieve efficient linkage and provide strong product and service guarantees for customers.

The company adheres to the business philosophy of "creating value for customers, creating platforms for employees, and achieving win-win cooperation", and is committed to building a benchmark brand in China's precision connector industry.



OUR PEOPLE

YOUNG, TALENTED, & PASSIONATE IN WORK.

企业形象



生产车间

PRODUCTION WORKSHOP



检验设备

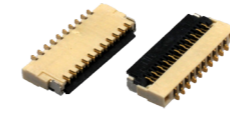
TESTING EQUIPMENT



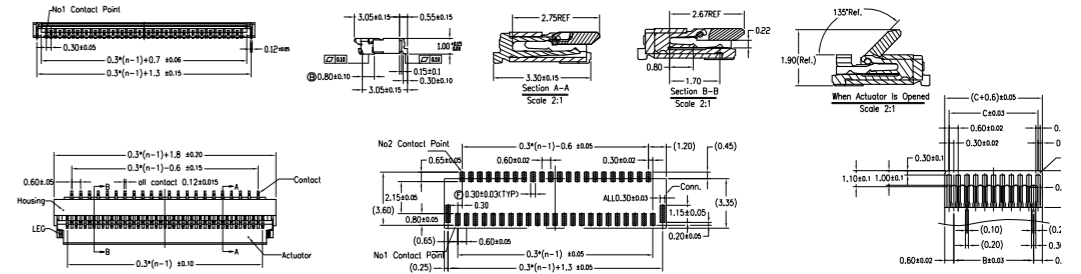
CONTENTS | 目录

● FPC 连接器系列	FPC connector	01
● FFC 排线系列	FFC cable	16
● 贴片针座系列	Wafer connector	18
● 插件针座系列	DIP wafer connector	30
● LVDS 系列	LVDS connector	32
● 板对板	Board to board connector	33
● 卡座	Card connector	34
● USB 系列	USB connector	37
● 排针排母	Pin header and female header	38

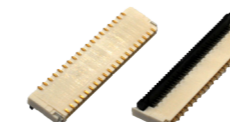
01



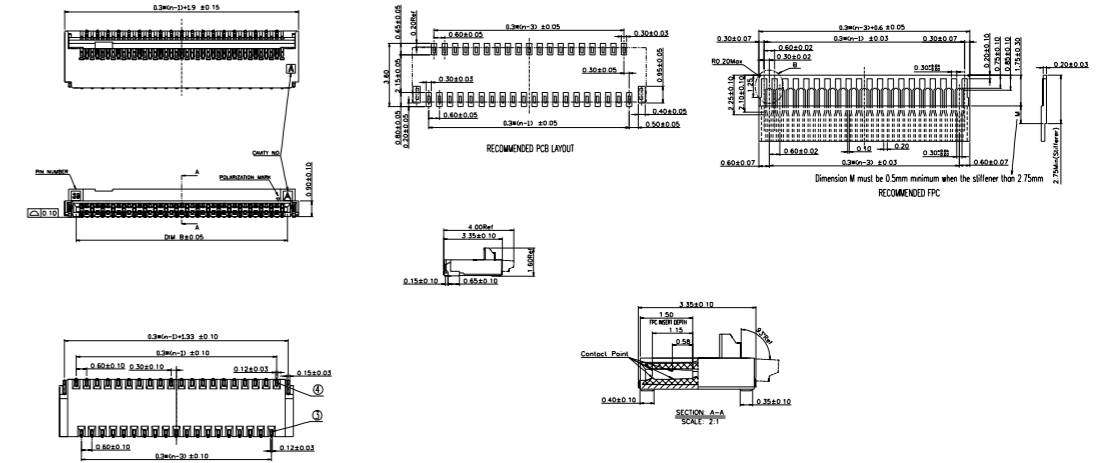
0.3 前掀盖 H1.0
0310-nRL-GF



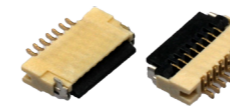
02



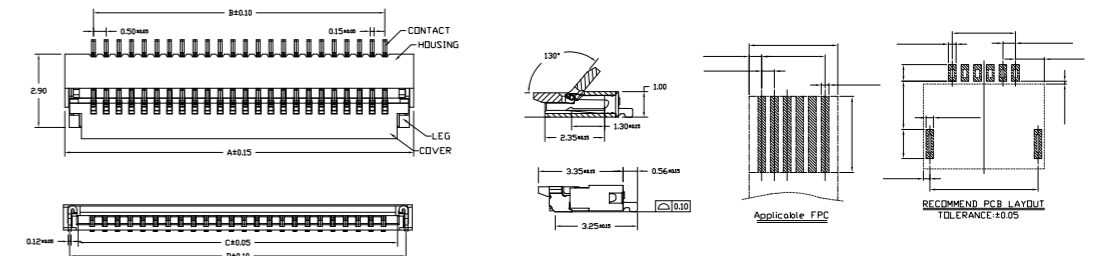
0.3 前插后掀盖 H1.0
0310-GX-nPWB



03



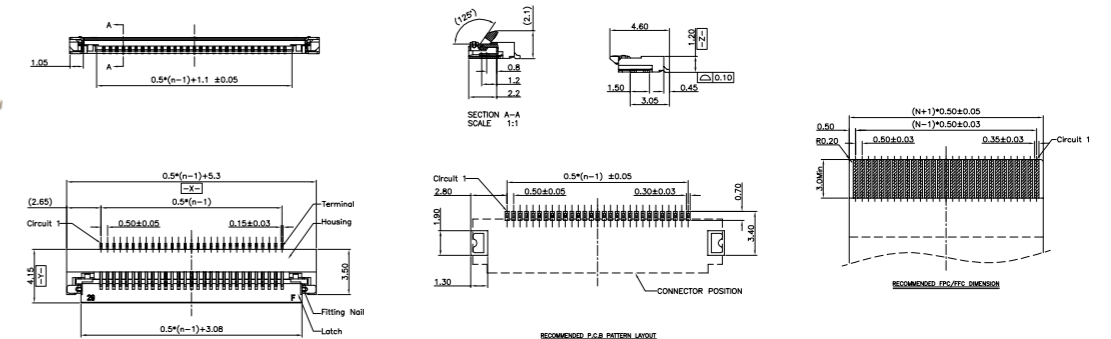
0.5 翻盖 H1.0
0510-nRL-GF



04



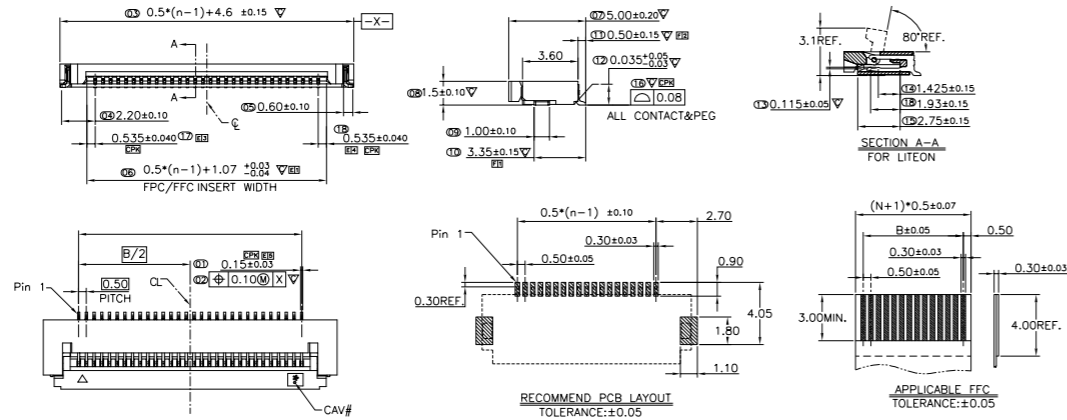
0.5 翻盖 H1.2
0512-DX-nPWB



05



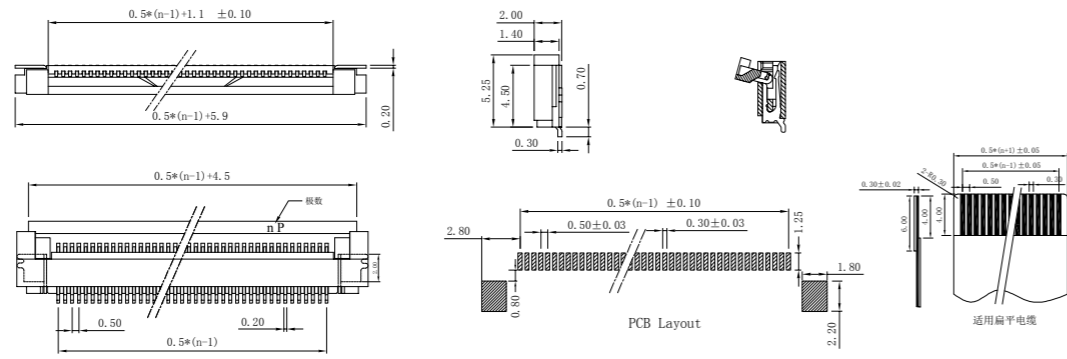
0.5 翻盖 H1.5
0515-nCL-SN



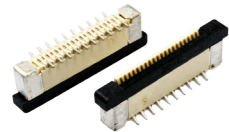
06



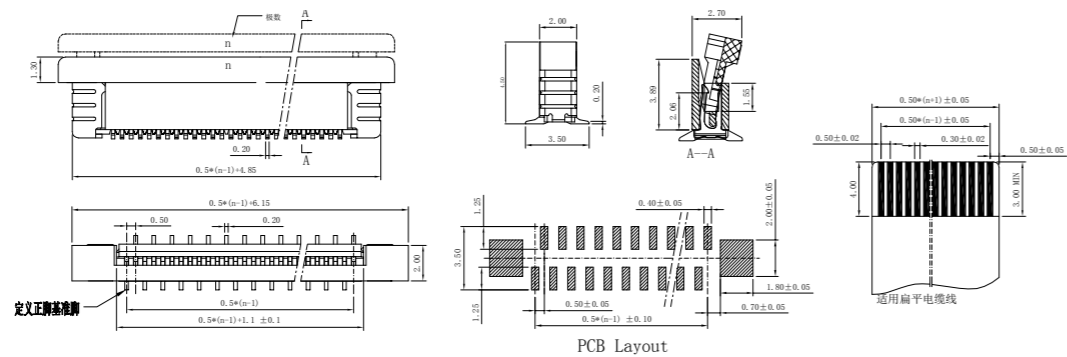
0.5 翻盖 H2.0
05K-DX-nPWB



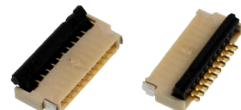
07



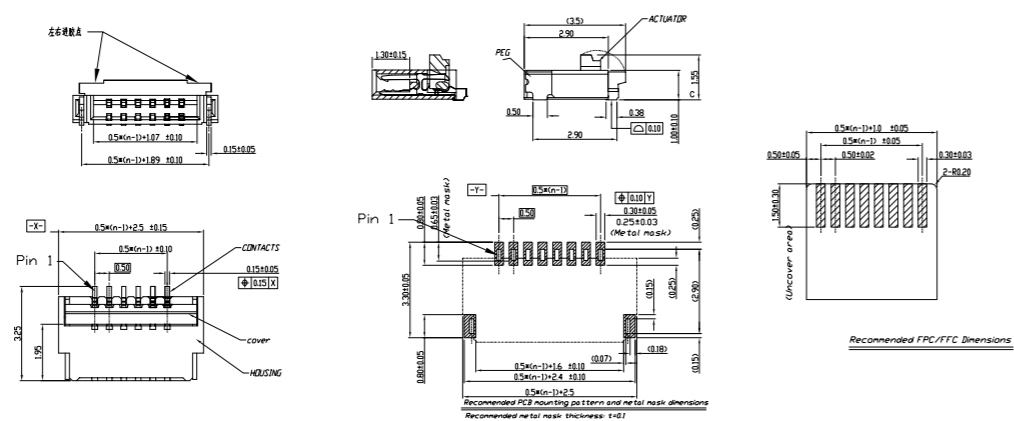
0.5 立贴正脚位
05K-A-nPB



08



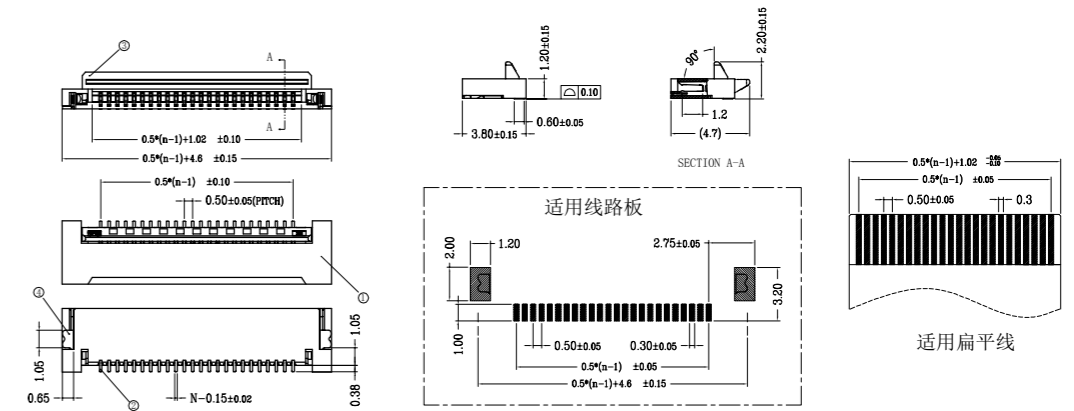
0.5 前插后掀 H1.0
0510-GX-nPWB



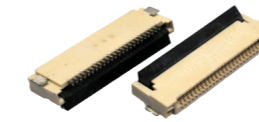
9



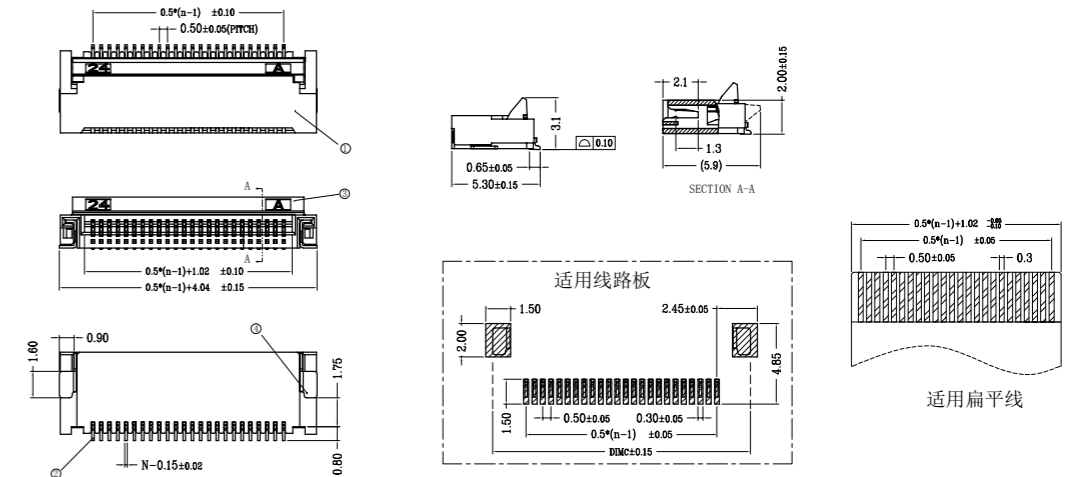
0.5 前插后掀 H1.2
0512-GX-nPWB



10



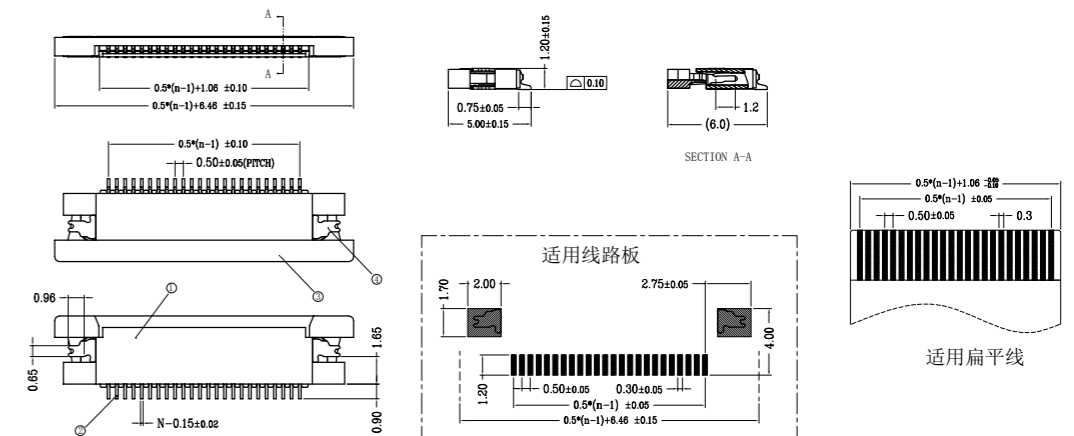
0.5 前插后掀 H2.0
05K-GX-nPWB



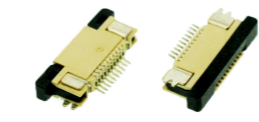
11



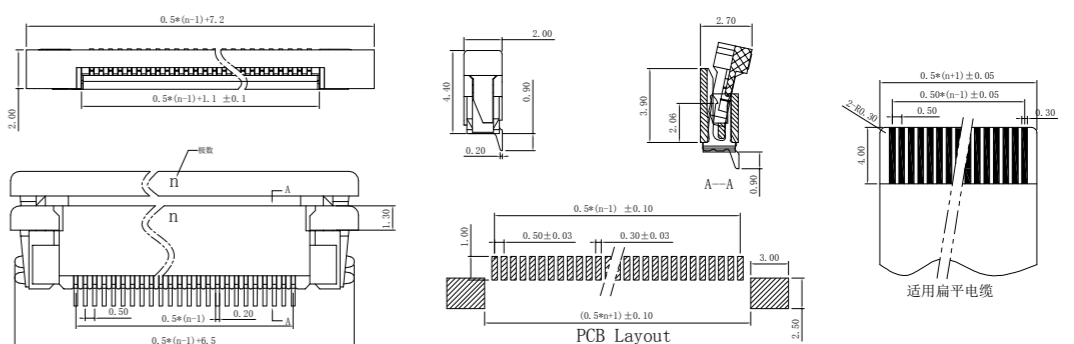
0.5 上接 H1.2
0512-nRU-SN



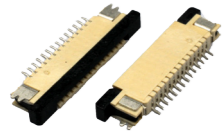
12



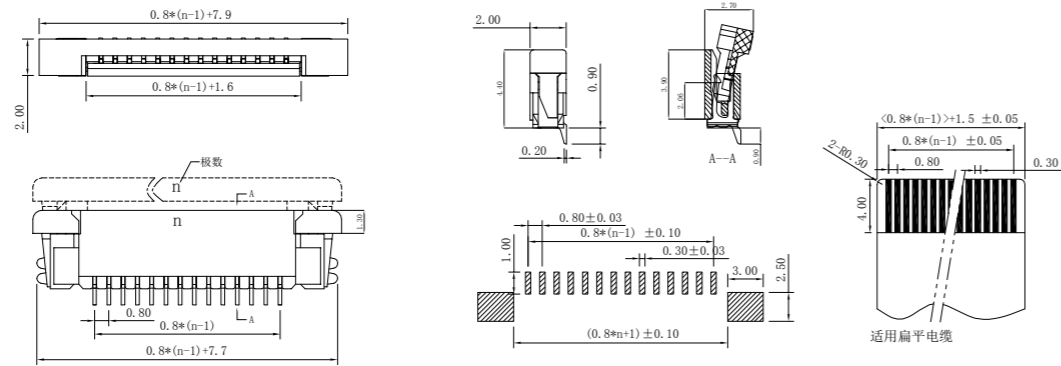
0.5 半包上接 H2.0
05K-BS-nPWB



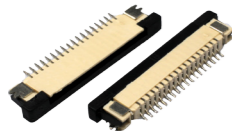
21



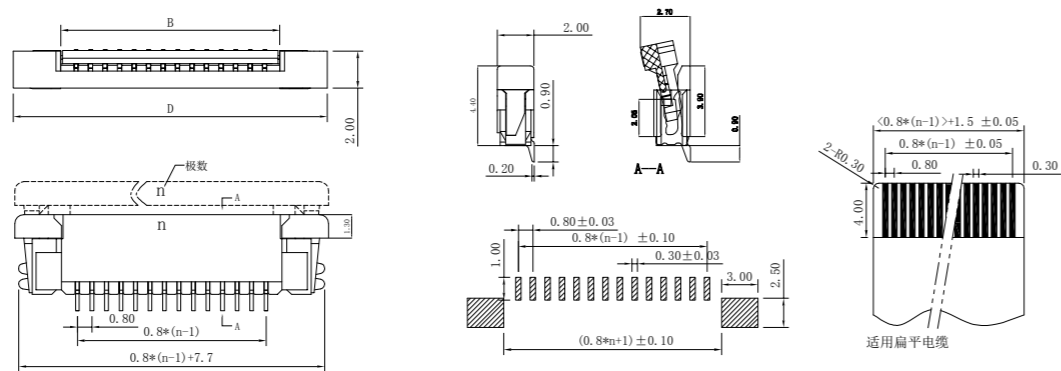
0.8 半包上接 H2.0
0.8K-AS-nPWB



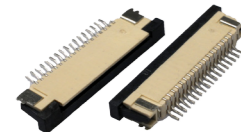
22



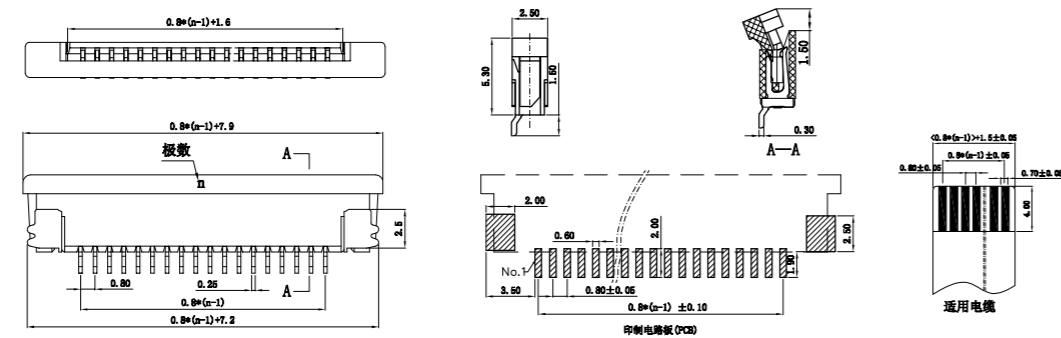
0.8 半包下接 H2.0
0.8K-AX-nPWB



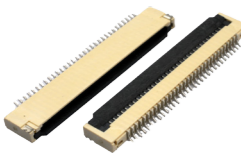
23



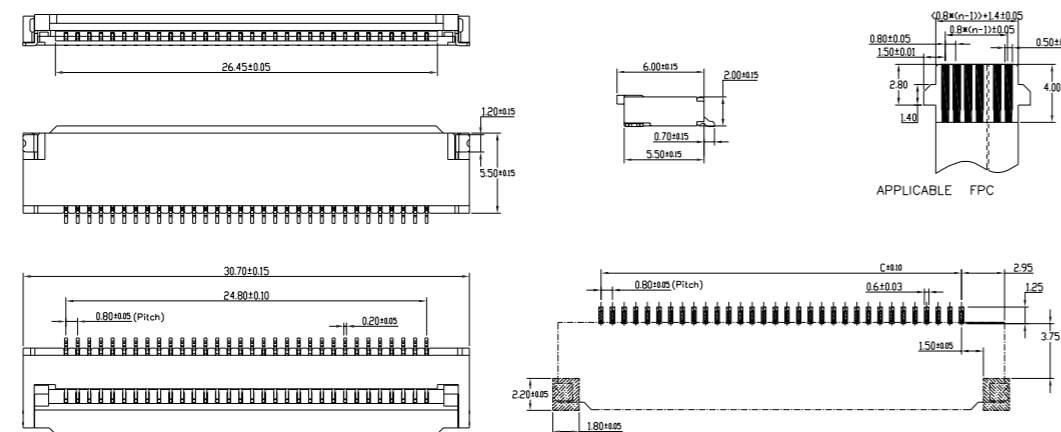
0.8 半包上接 H2.5
0.8K-BS-nPWB



24



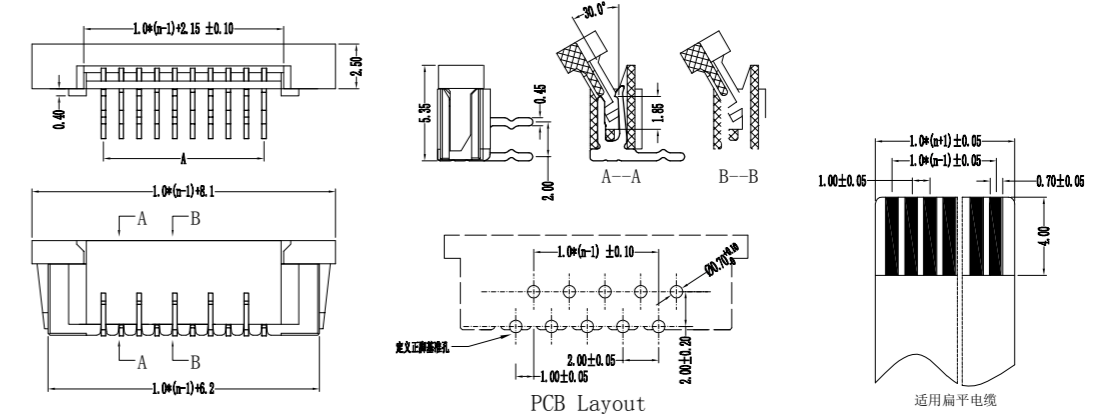
0.8 翻盖带扣 32P
0820-32CL-SN



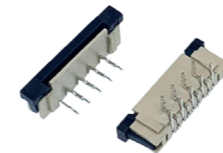
25



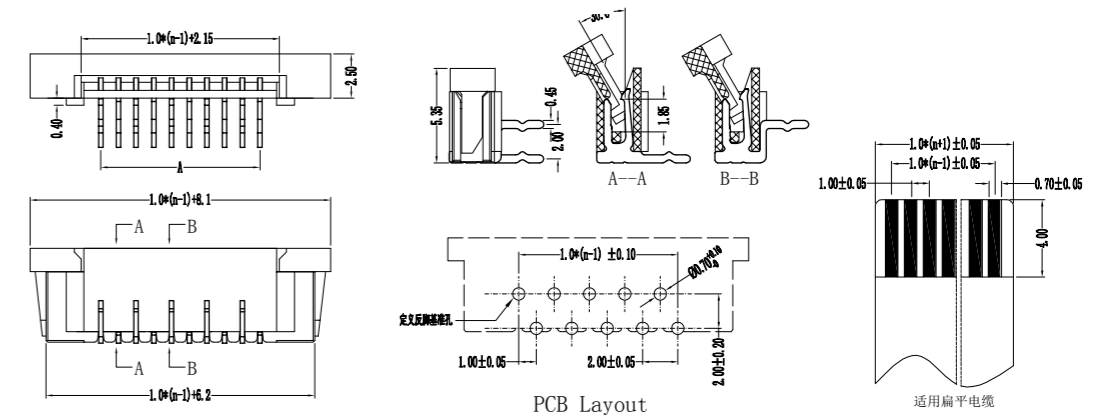
1.0 带锁弯插
1.0K-J-nPW



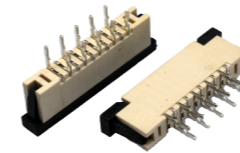
26



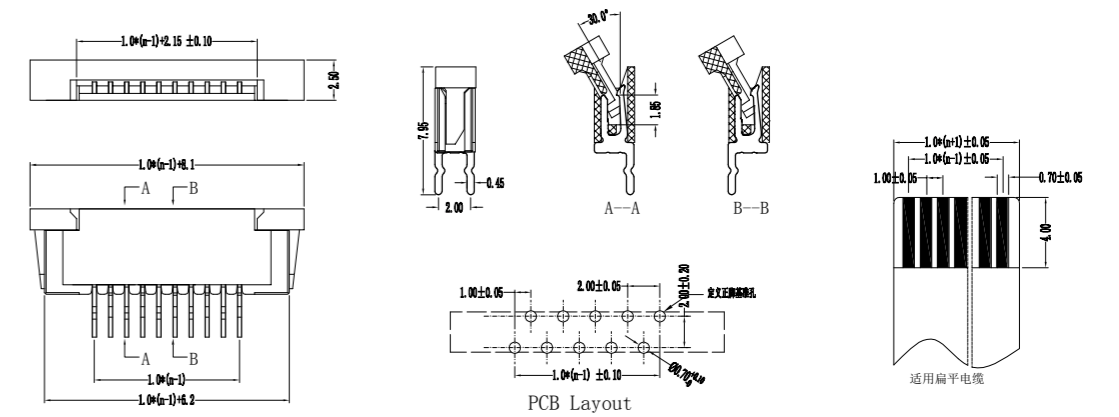
1.0 带锁弯插反脚位
1.0K-J-nPWF



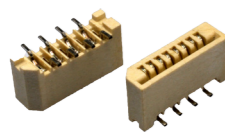
27



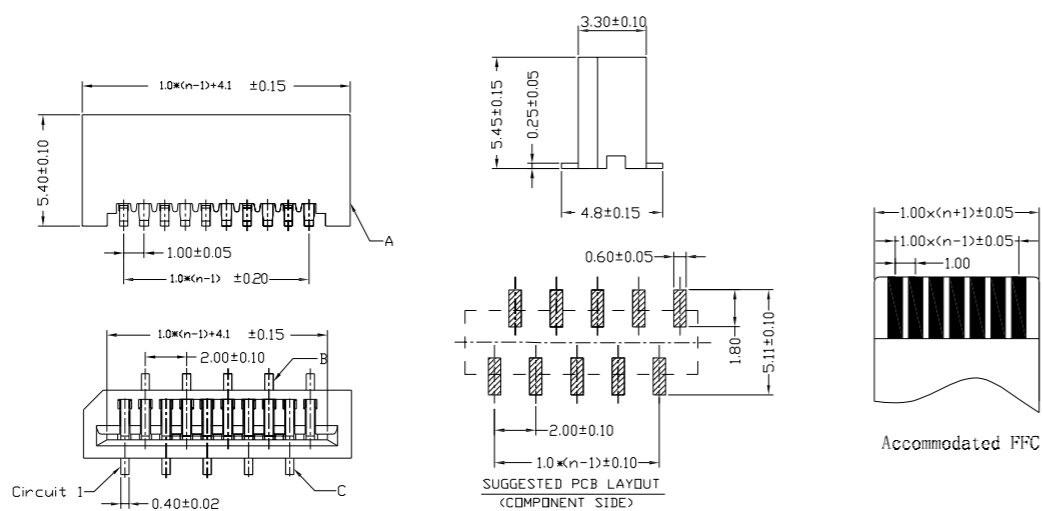
1.0 带锁直插
1.0K-H-nP



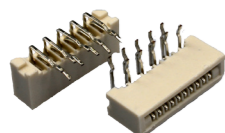
28



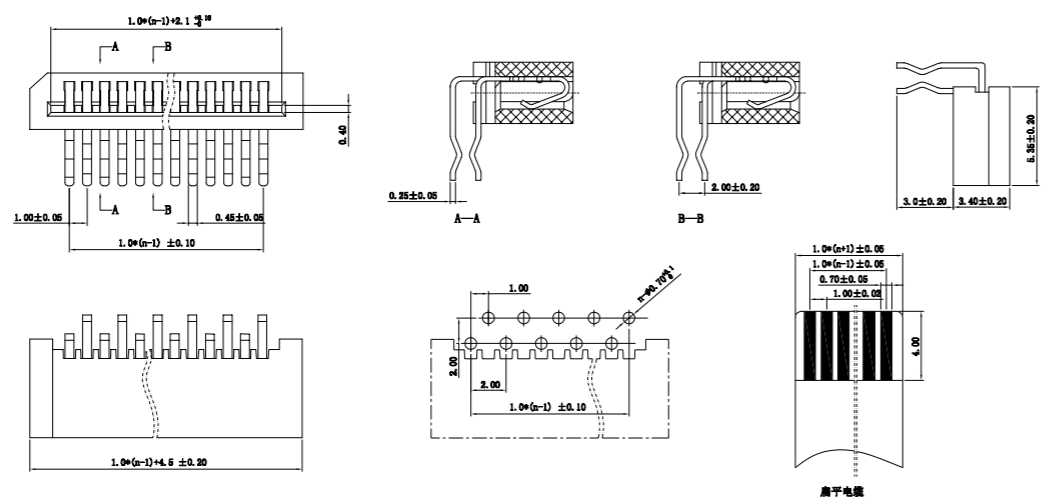
1.0 单面接立插
1.0-A-nPLT



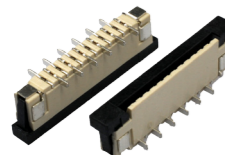
29



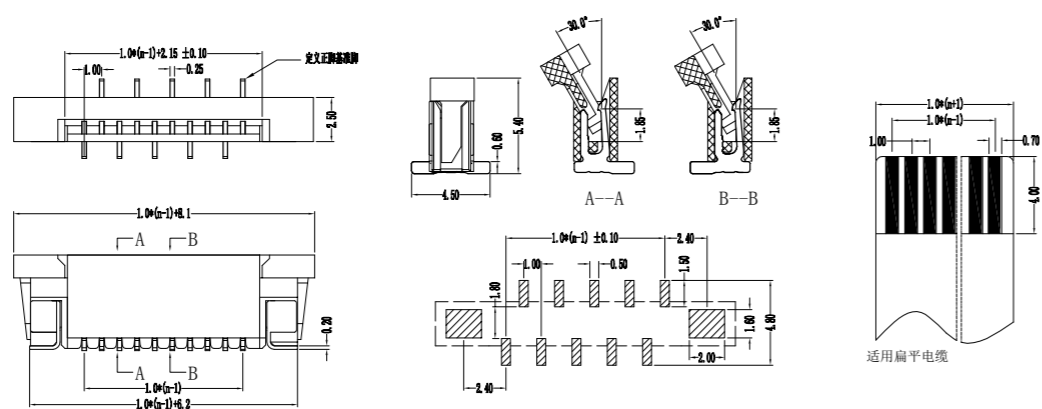
1.0 单面接弯插
1.0-A-nPW



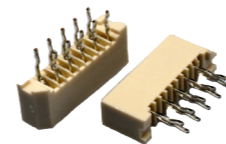
30



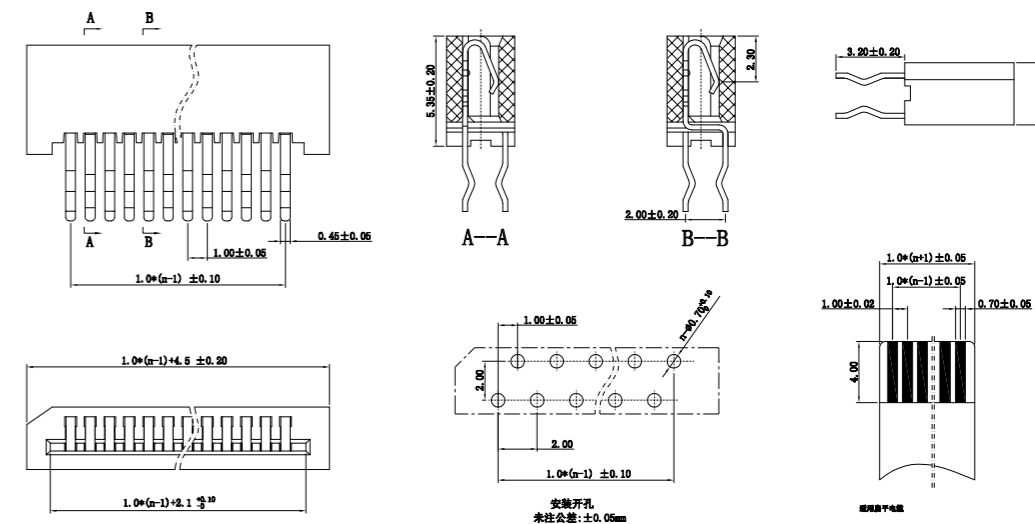
1.0 立贴错位带焊片
1.0K-GL-nPB(有焊片)



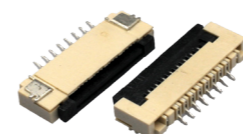
31



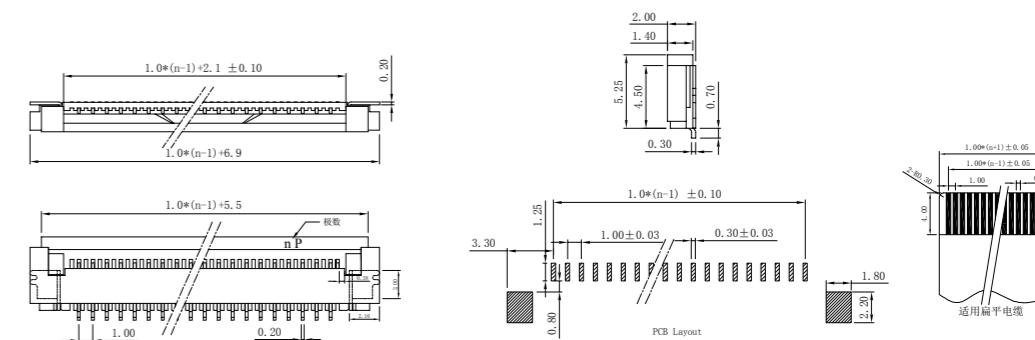
1.0 单面接直插正脚位
1.0-A-nP



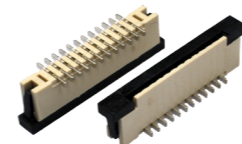
32



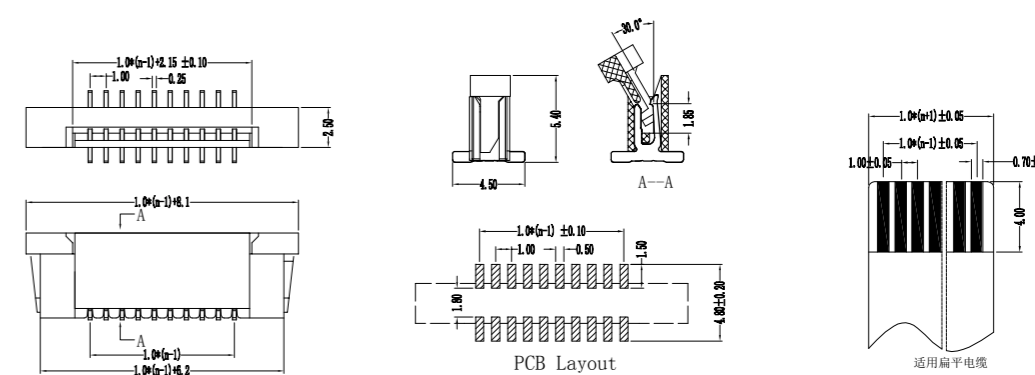
1.0 翻盖 H2.0
1.0K-DX-nPWB



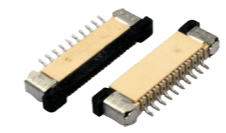
34



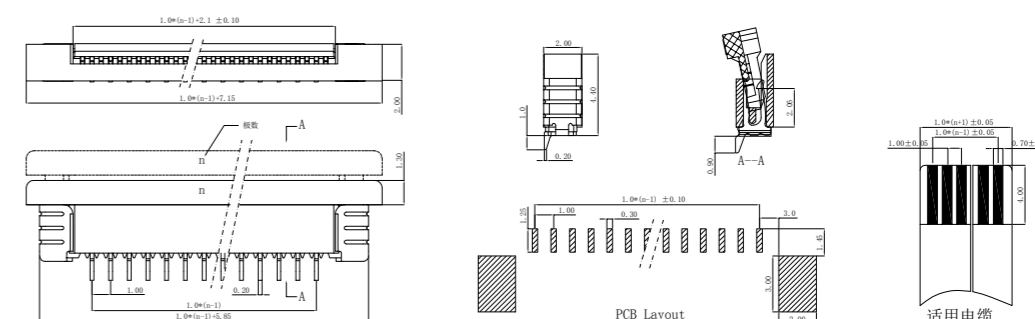
1.0 立贴一字不带焊片
1.0K-GT-nPB



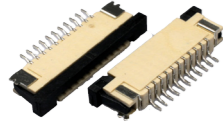
35



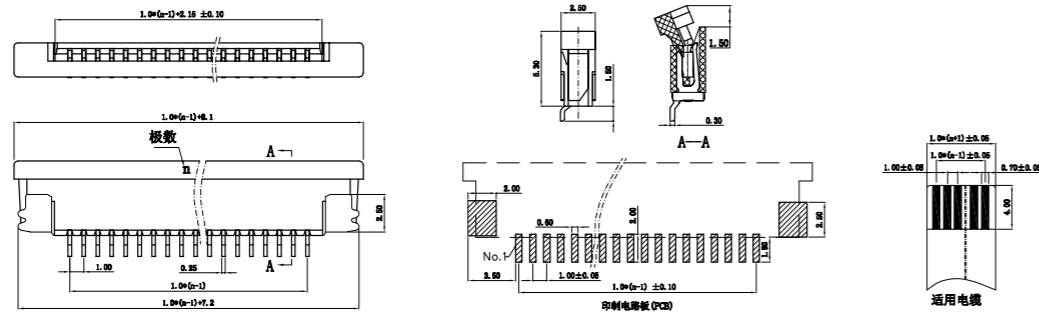
1.0 上接 H2.0
1.0K-LS-nPWB



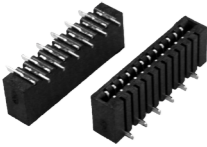
36



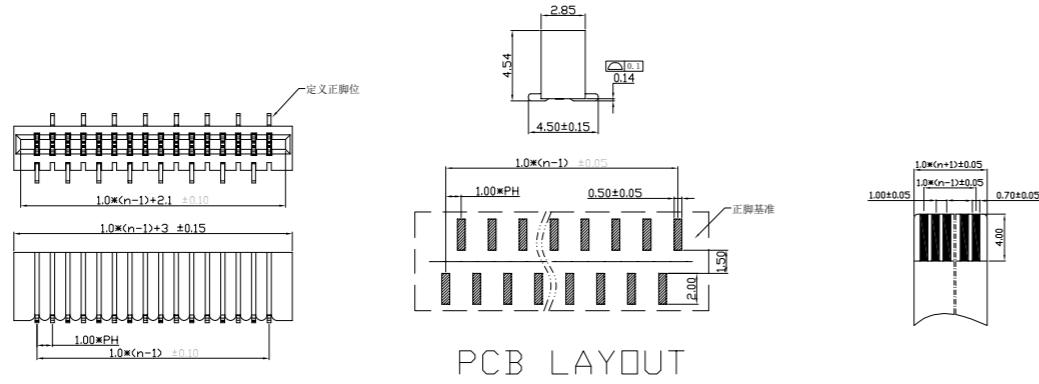
1.0 上接 H2.5
1.0K-ES-nPWB



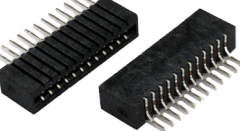
37



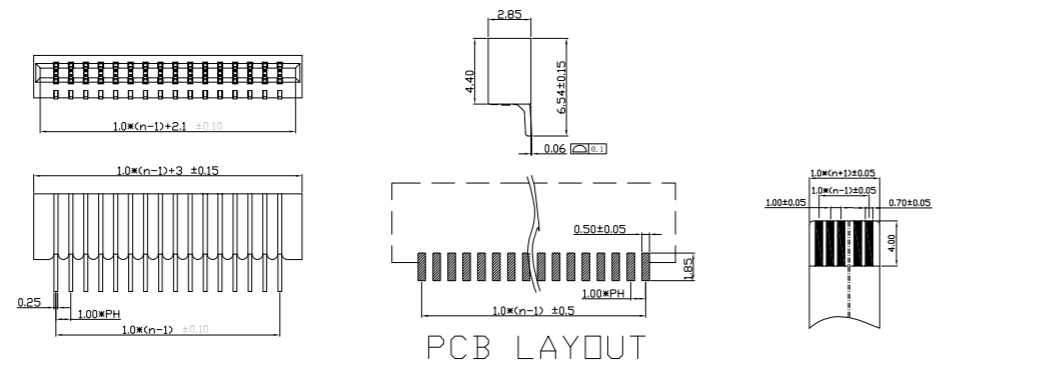
1.0 双面接立贴
1.0-B-nPB



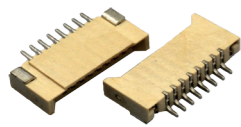
38



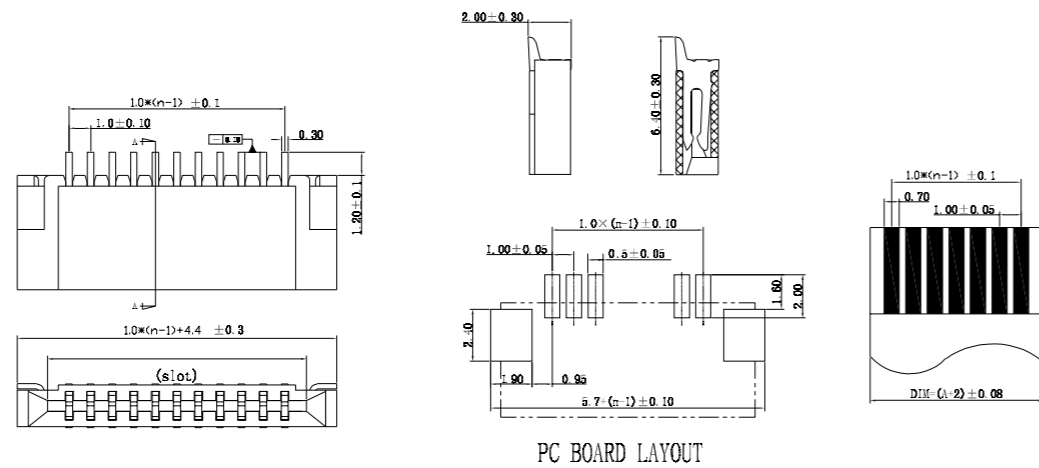
1.0 双面接卧贴
1.0-B-nPWB



39



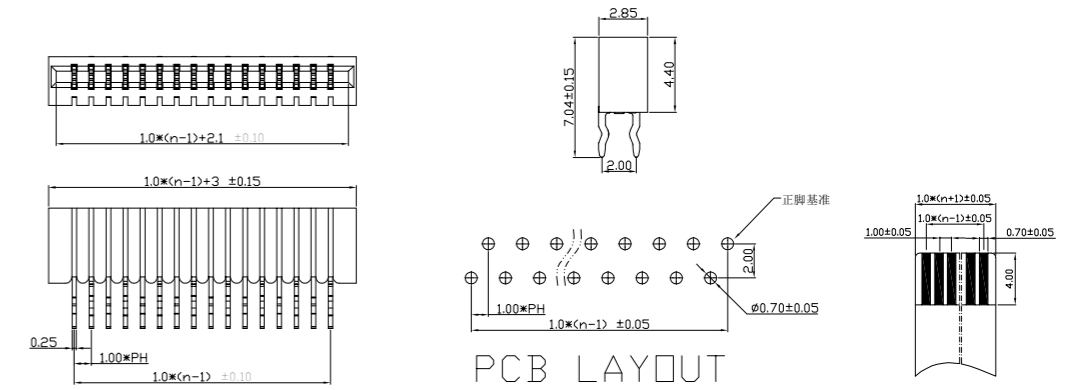
1.0 双面接卧贴带焊片
1.0-CB-nPWB



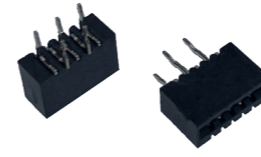
40



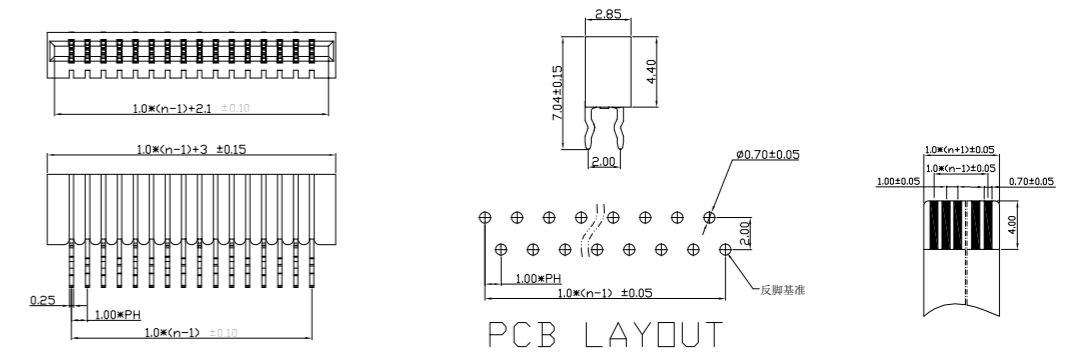
1.0 双面接直插
1.0-B-nP



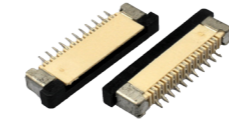
41



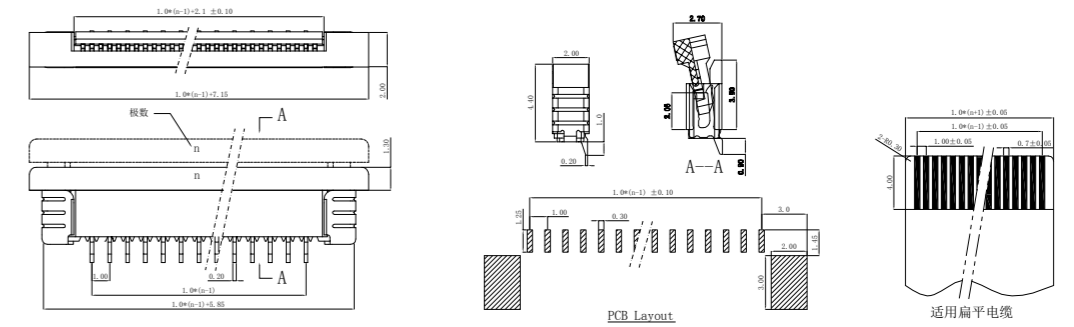
1.0 双面接直插反脚位
1.0-B-nPF



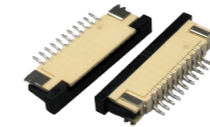
42



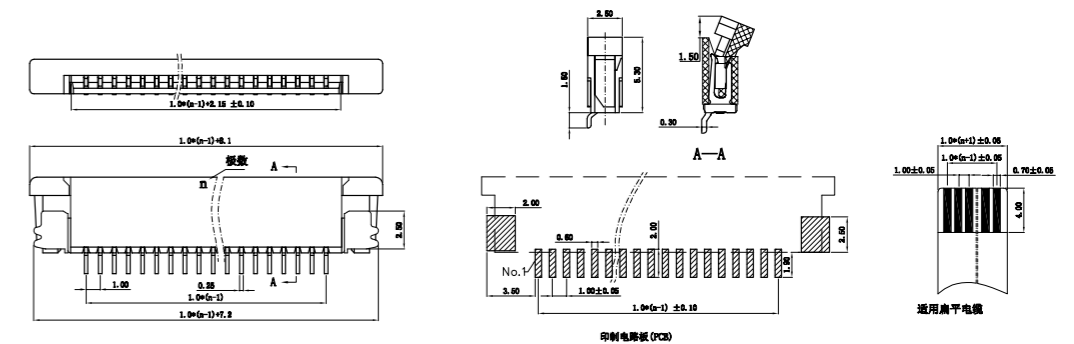
1.0 下接 H2.0
1.0K-MX-nPWB



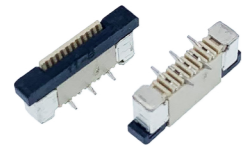
43



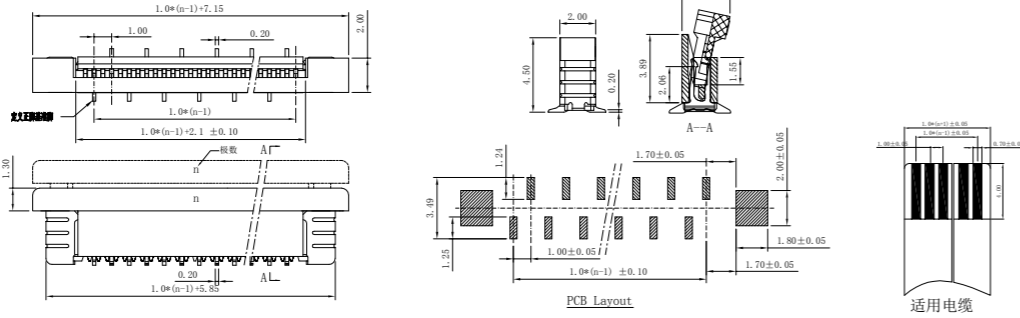
1.0 下接 H2.5
1.0K-FX-nPWB



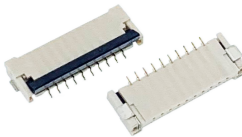
44



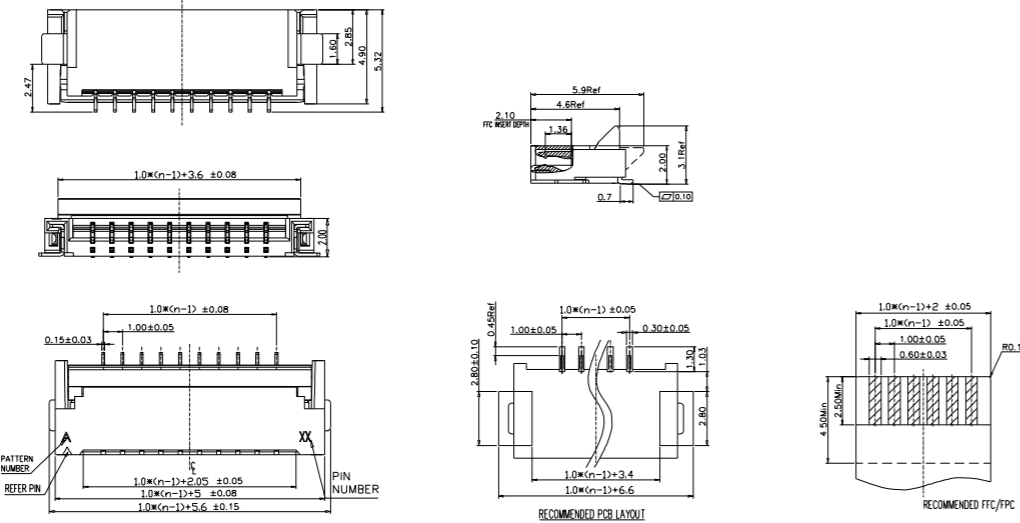
1.0 N 型立贴正脚位
1.0-N-nPB



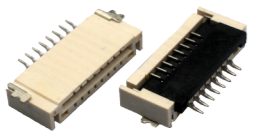
45



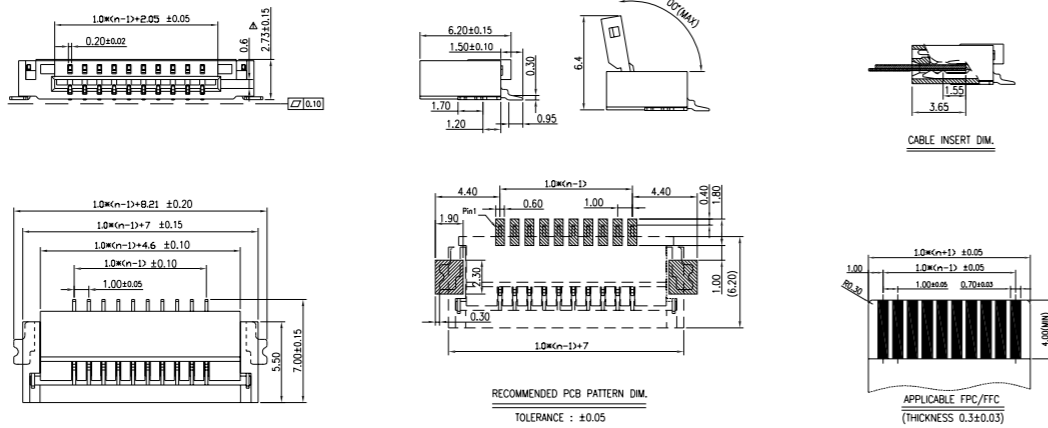
1.0 前插后翻 H2.0
1020-GX-nPWB



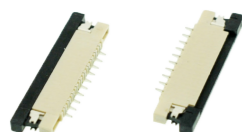
46



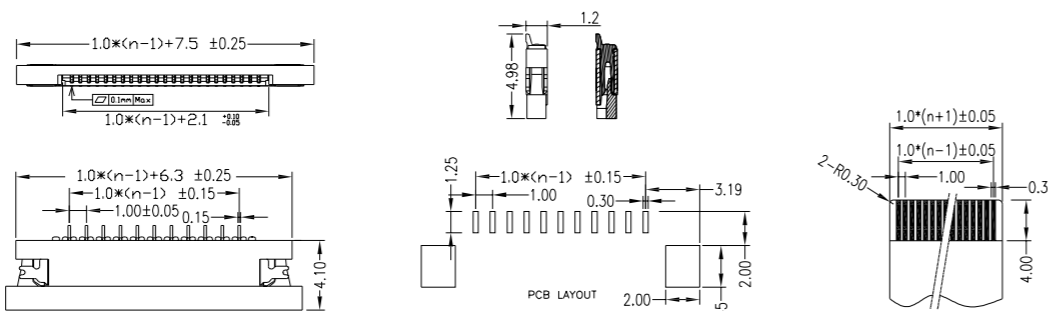
1.0 前插后掀大锁 H2.73
10273-GX-nPWB



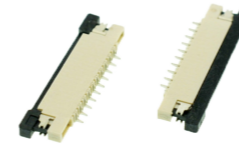
47



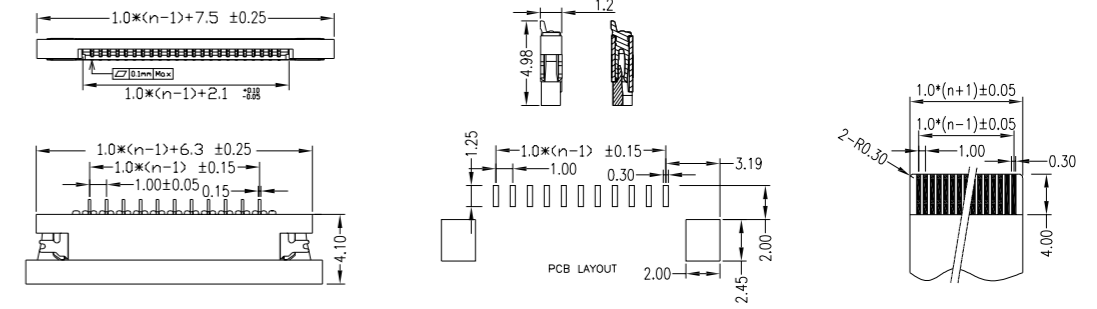
1.0 下接 H1.2
1012-nRL-SN



48



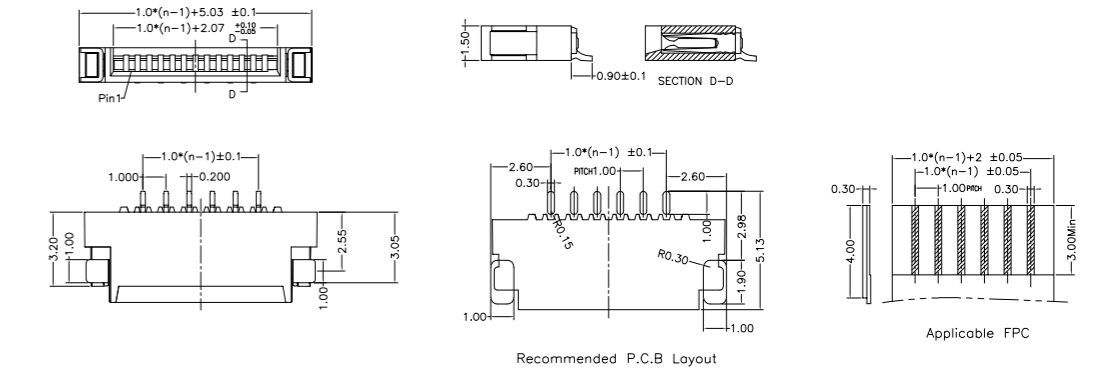
1.0 上接 H1.2
1012-nRU-SN



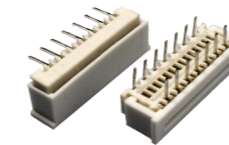
49



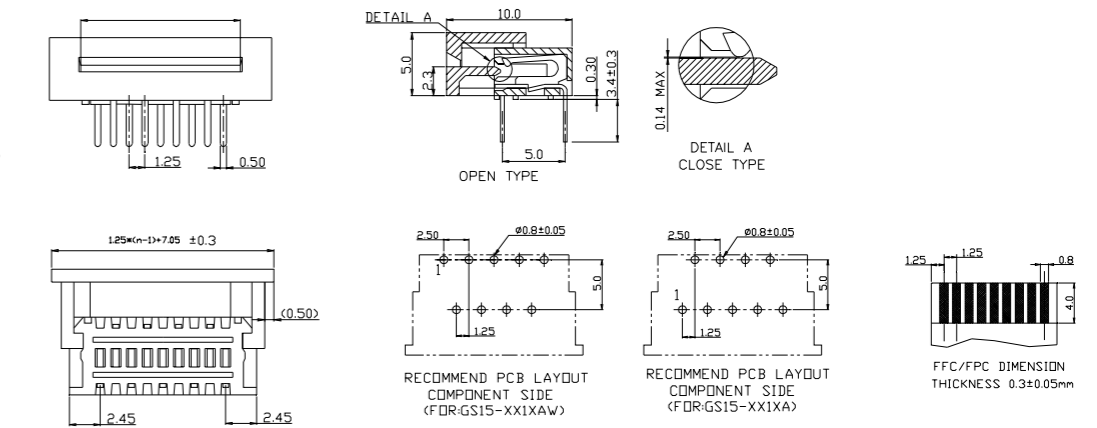
1.0 双面接卧贴 H1.5
1015-nR-SN



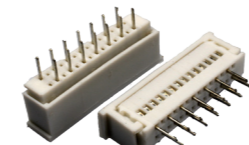
50



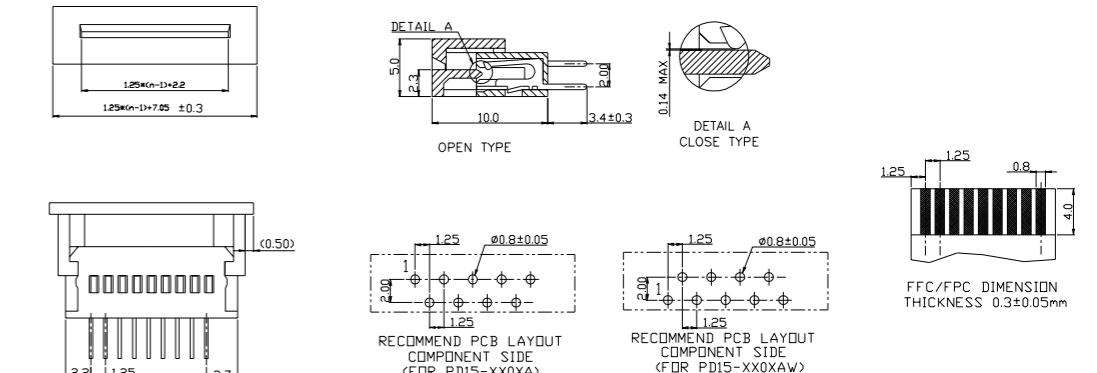
1.25 带锁弯插
1.25-J-NPW



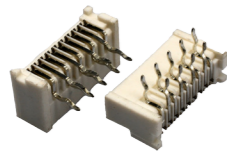
51



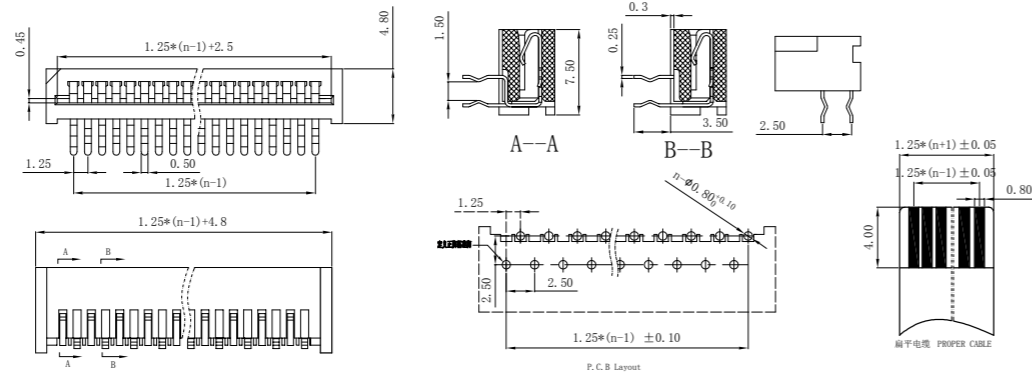
1.25 带锁直插
1.25-H-NP



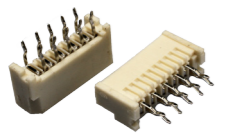
52



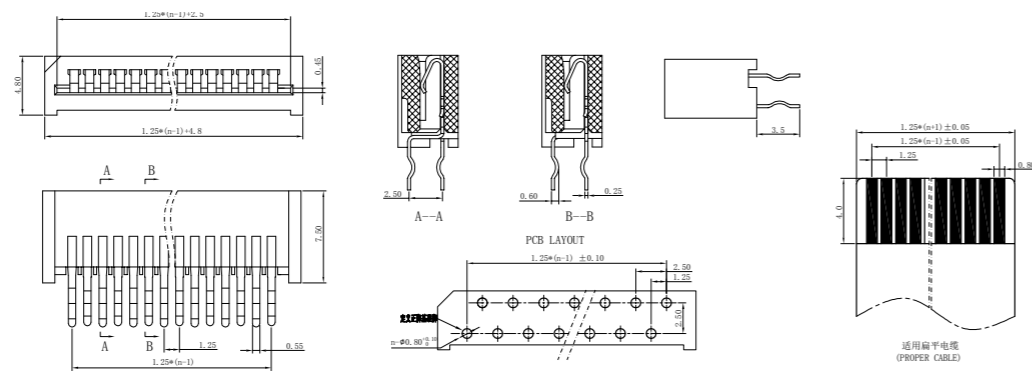
1.25 单面接弯插
1.25-A-nPW



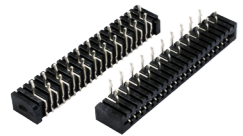
53



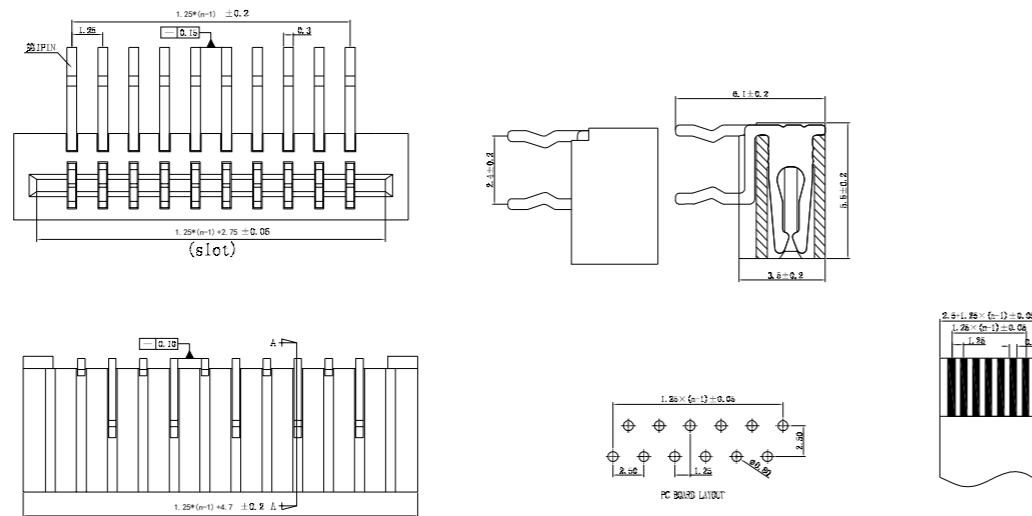
1.25 单面接直插
1.25-A-nP



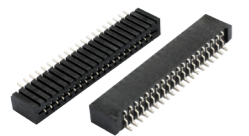
54



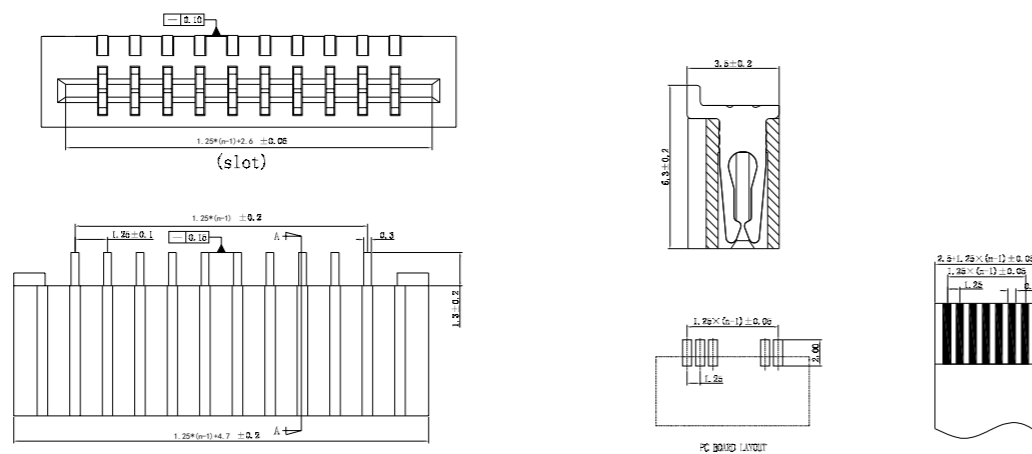
1.25 双面接弯插
1.25-B-nPW



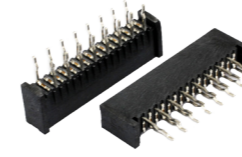
55



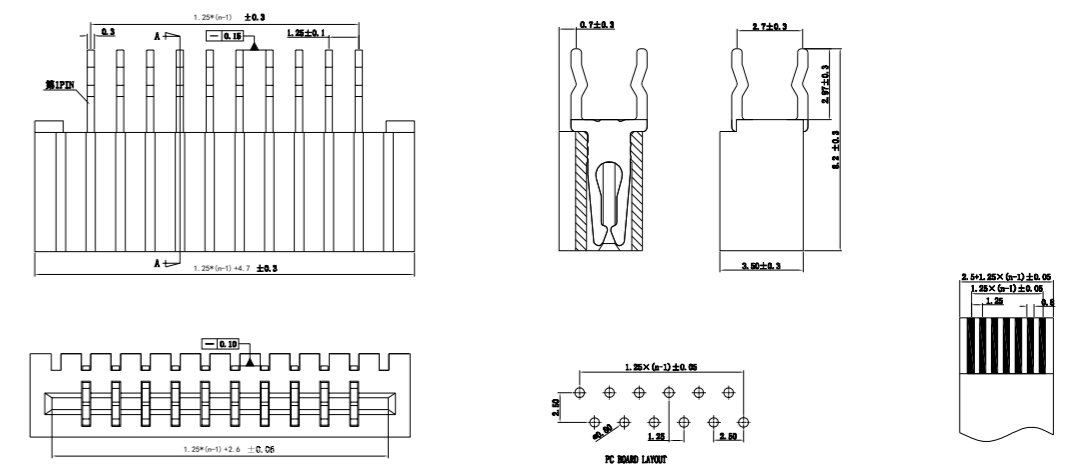
1.25 双面接卧贴
1.25-B-nPWB



56



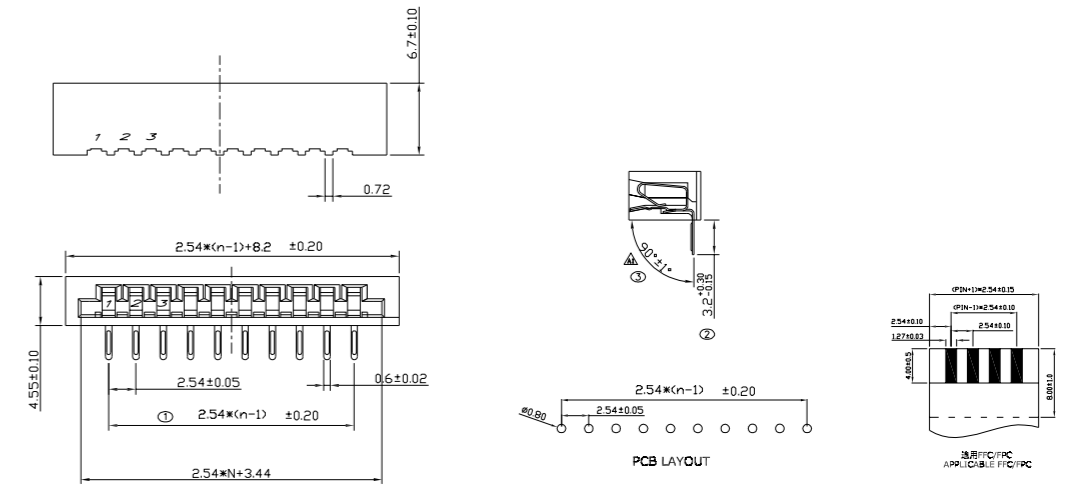
1.25 双面接直插
1.25-B-nP



57



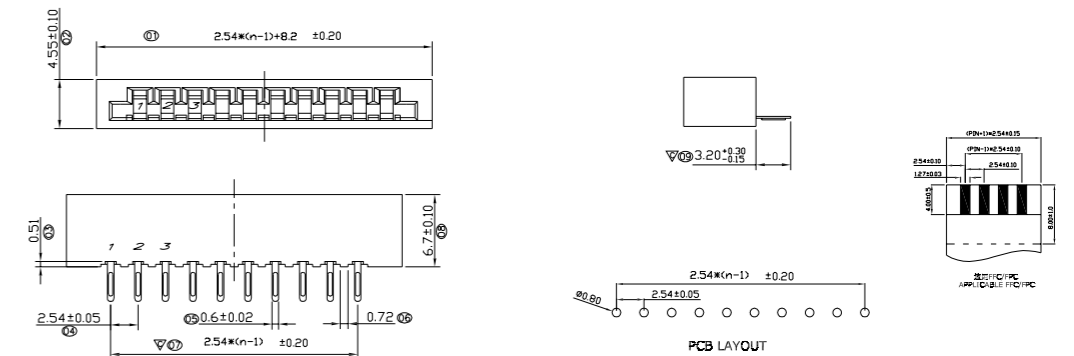
2.54 弯插薄膜插座
2.54-A-nPW



58



2.54 直插薄膜插座
2.54-A-nP

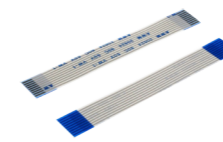


类型 Type	型号结构 Pattern Structure		简易描述 Simple Description
	正面 Front	反面 Back	
A			两端接插且补强板同侧粘贴在绝缘膜上 Both side connecting and supporting tape stick on the insulation film
B			补强板交叉反向直接粘贴在绝缘膜上 supporting tape is crossed and direct stick on the insulation film
C			补强板直接粘贴在导体上 supporting tape is direct stick on the Conductor
D			补强板交叉反向直接粘贴在导体上 supporting tape is crossed and direct stick on the Conductor
E			一端连接, 另一端直接焊接 One end connecting the other end soldering
F			两端连接, 补强板一半粘贴在绝缘膜上 Both side connecting and half supporting tape stick on the insulation film
G			两端直接焊接 Both and soldering
H			相同于型号A, 无补强板 The same as A type without Supporting tape
I			相同于型号B, 无补强板 The same as B type without Supporting tape
J			补强板交叉且两端补强板一半粘贴在绝缘膜上 supporting tape is crossed and both side half stick on the insulation film
K			一端插接另一端补强板的一半粘贴在绝缘膜上 One end connecting the other end half supporting tape stick on the insulation film
L			一端补强板贴导体, 另一端直接焊接 supporting tape direct on the conductor the other end soldering
M			相同于型号A, 一端无补强板 The same as A type with one and no Supporting tape
N			相同于型号B, 一端无补强板 The same as B type with one and no Supporting tape
O			无线口, 无补强板 No conductor bare and no Supporting tape
P			补强板交叉, 有一端补强板一半粘贴在绝缘膜上 supporting tape is crossed, have one half supporting tape stick on the insulation film
Q			相同于型号G, 一端无线口 The same as G type without conductor bare
R			相同于型号E, 无补强板 The same as E type with one and no Supporting tape
S			相同于型号B, 一端补强板直接粘贴导体 The same as B type, one end supporting tape is direct stick on the Conductor
T			相同于型号A, 一端补强板直接粘贴导体 The same as A type, one end supporting tape is direct stick on the Conductor
U			相同于型号E, 补强板半粘 The same as E type with one and no half Supporting tape stick on the insulation film

FFC 排线详细参数

间距	导体 (厚度 * 宽度 MM)			胶膜 (厚度 MM)			补强板 (厚度 MM) 长度 3-20MM				线长 20MM 以上
	0.035*0.3	0.05*0.3	0.1*0.3	0.043	0.06	0.1	0.16	0.225	0.25	0.28	
0.5	0.035*0.3	0.05*0.3	0.1*0.3	0.043	0.06	0.1	0.16	0.225	0.25	0.28	20MM 以上
0.8	0.035*0.3	0.05*0.5									
1.0	0.035*0.65	0.05*0.65	0.1*0.65								
1.25	0.05*0.8	0.1*0.8									
2.0	0.1*0.8	0.05*0.65									
2.54	0.1*0.8	0.1*1.27									

59



同向 (A型) 排线

60



异向 (B型) 排线

61



LVDS41P 51P 排线

62



包醋酸布排线

63



包导电布排线

64



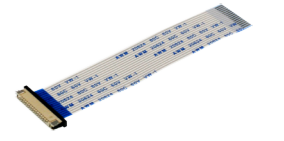
分线包醋酸布排线

65



0.5 焊接头线
LVDS 30P 40P

66



配连接器排线

67



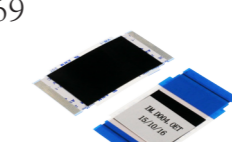
1.0 LVDS 焊接头线

68



G型焊接线

69



冲边镀金屏蔽排线

70



冲边排线

71



多程序加工线

72



黑色胶膜排线

73



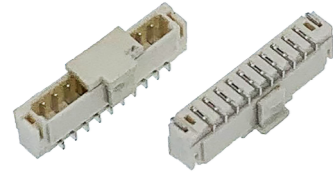
冲边镀金屏蔽排线

74

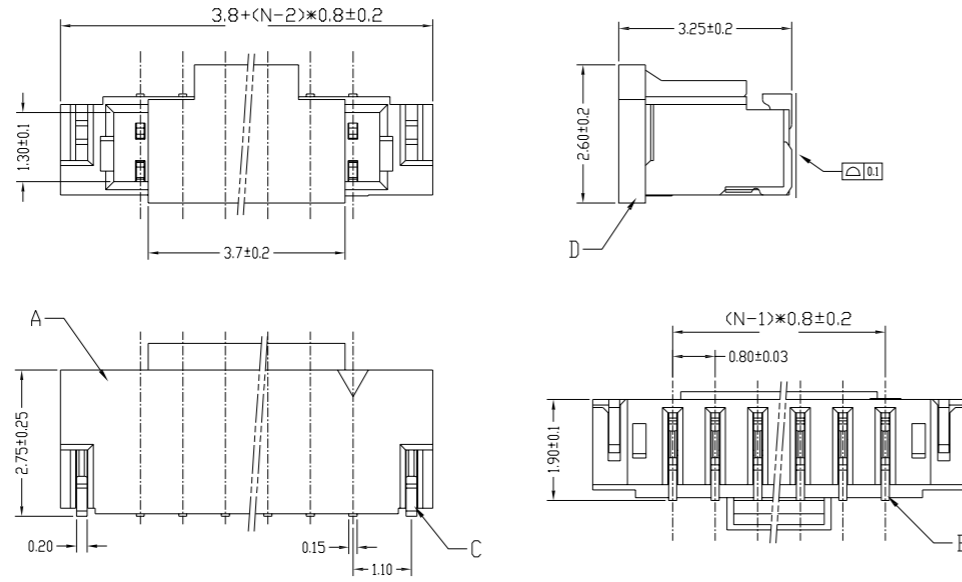


折线

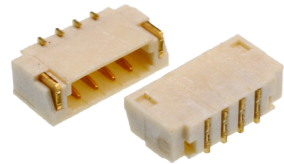
75



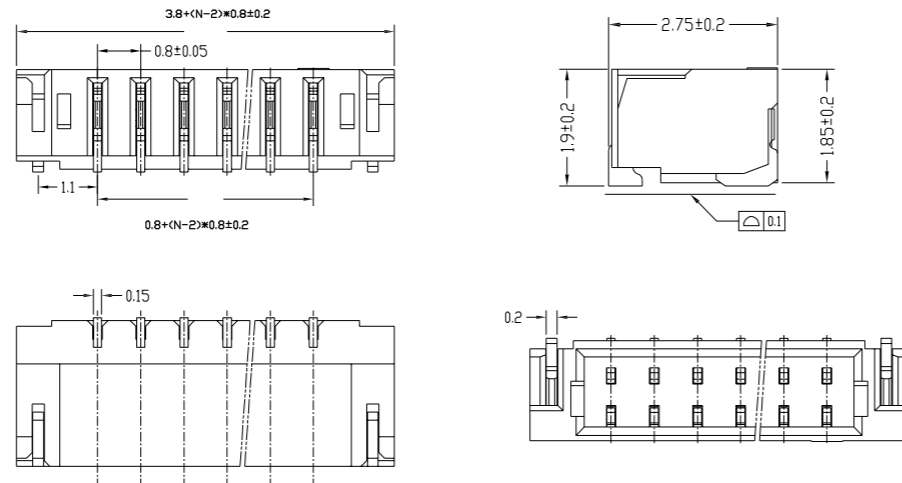
0.8 立贴
A0800WV-S-nP



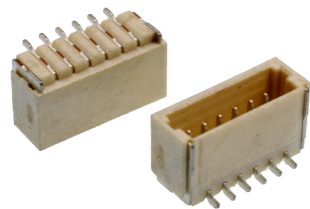
76



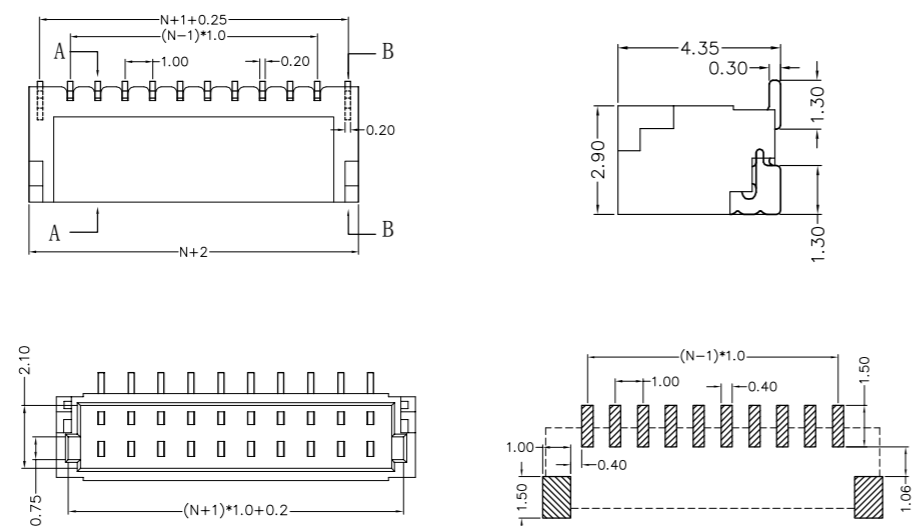
0.8 卧贴
A0800WR-S-nP



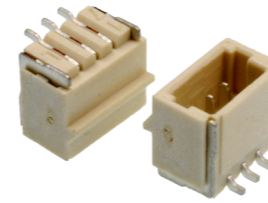
77



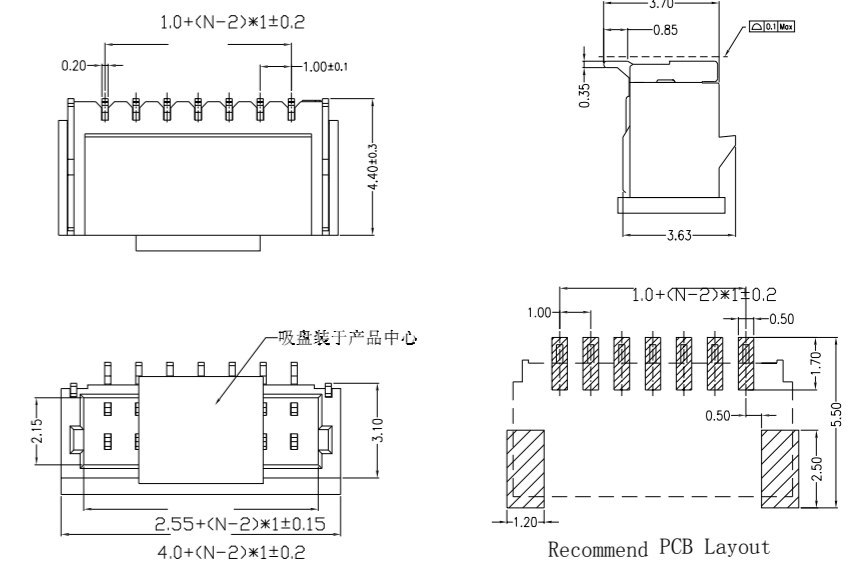
1.0 立贴
1.0-P-nPB



78

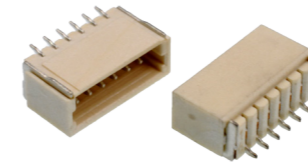


1.0 立贴带扣
1.0-PT-nPB

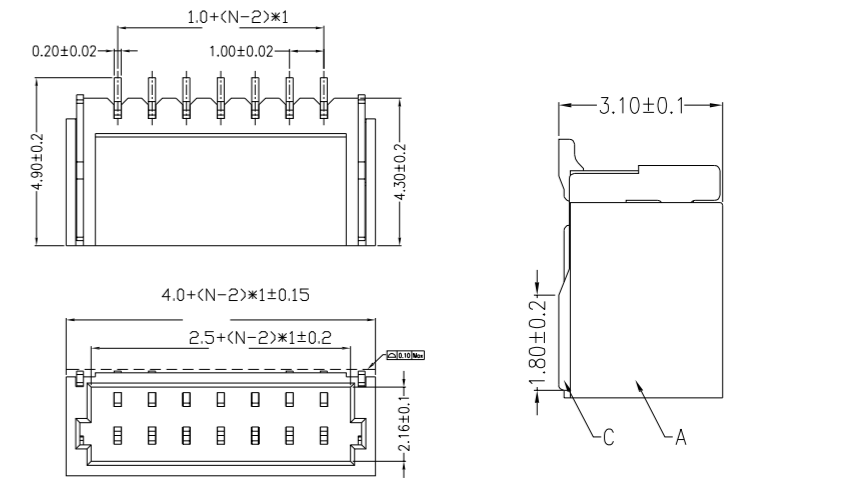


Recommend PCB Layout

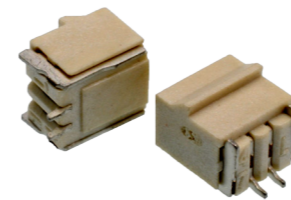
79



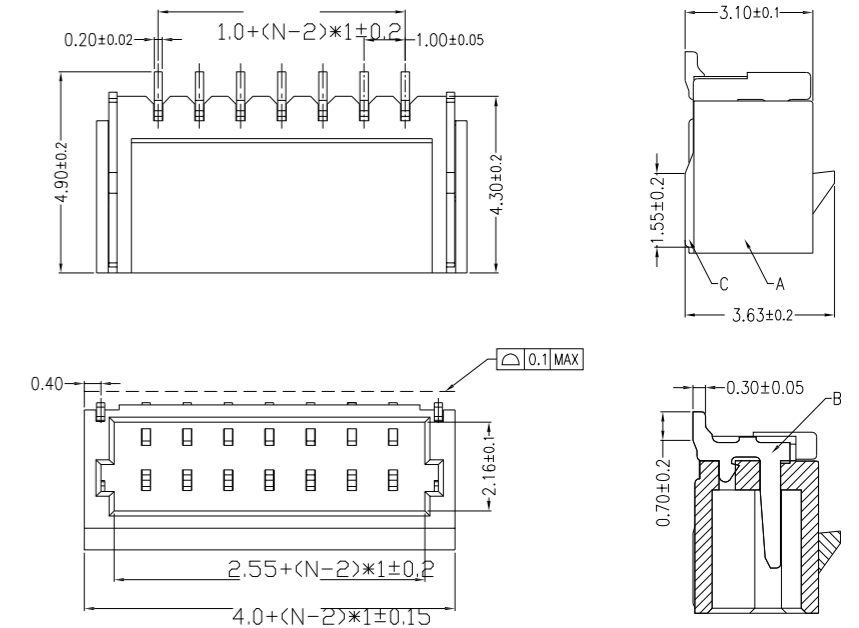
1.0 卧贴
1.0-Q-nPWB



80



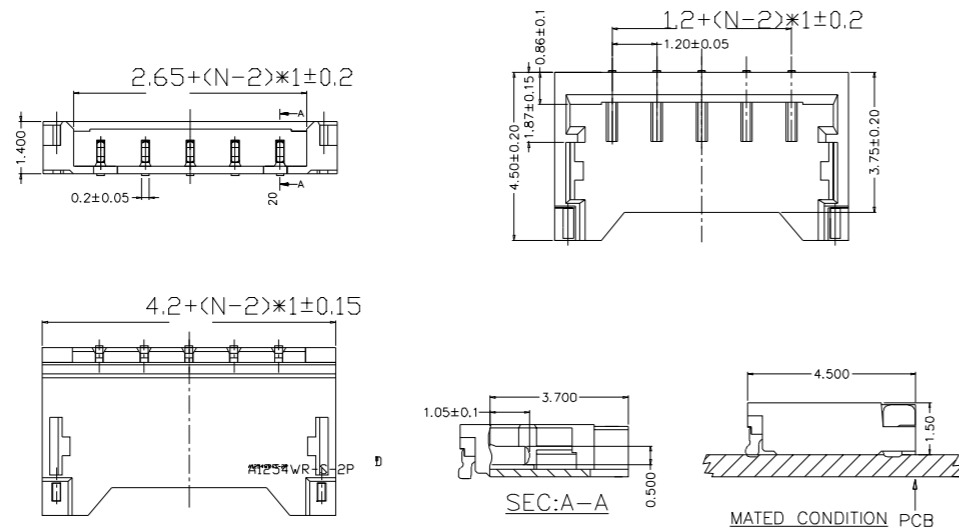
1.0 卧贴带扣
1.0-QT-nPWB



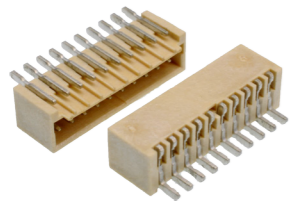
81



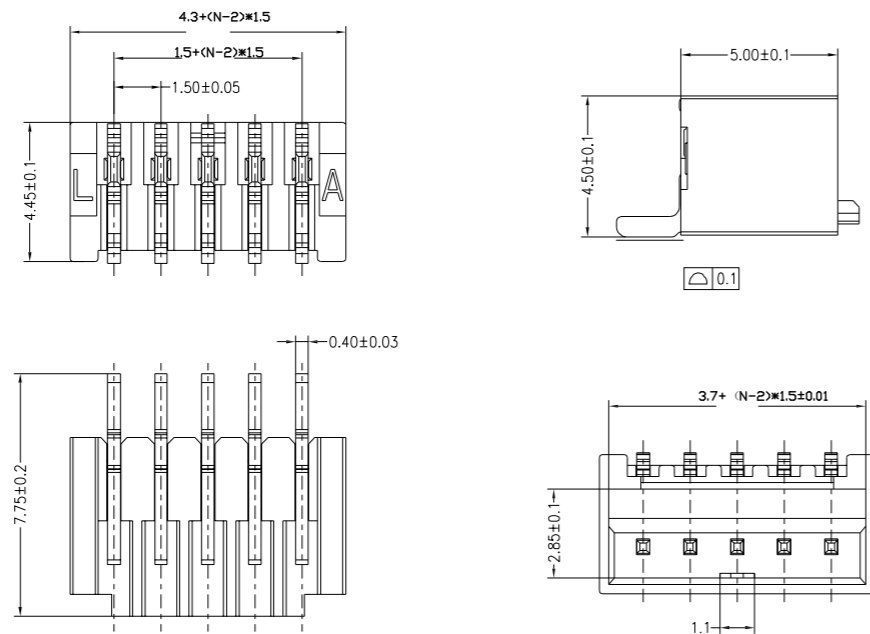
1.2 卧贴针座
A1201WV-S-XP



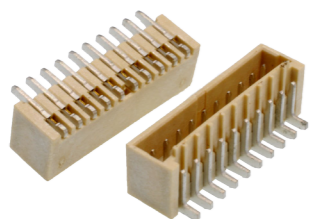
82



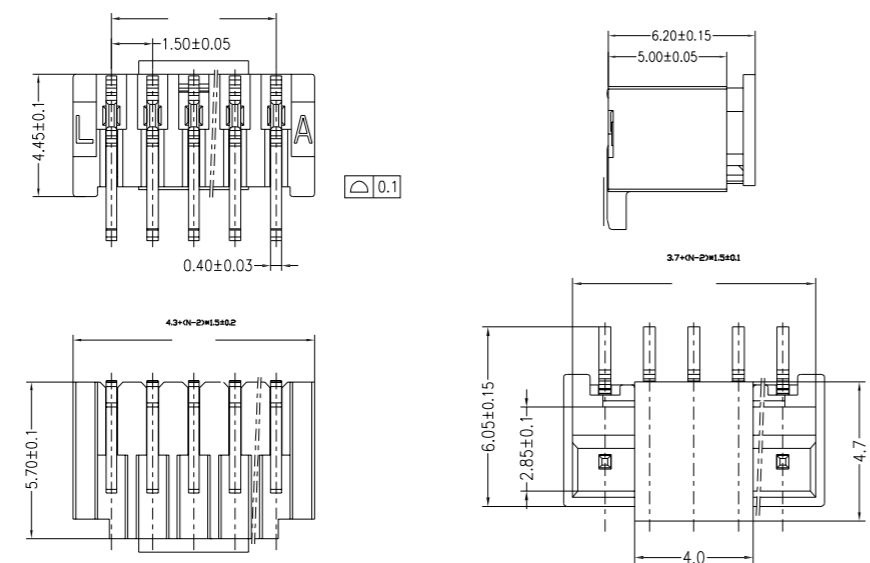
1.5 卧贴特殊款
A1504AWR-xx



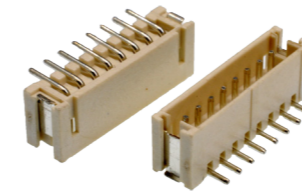
83



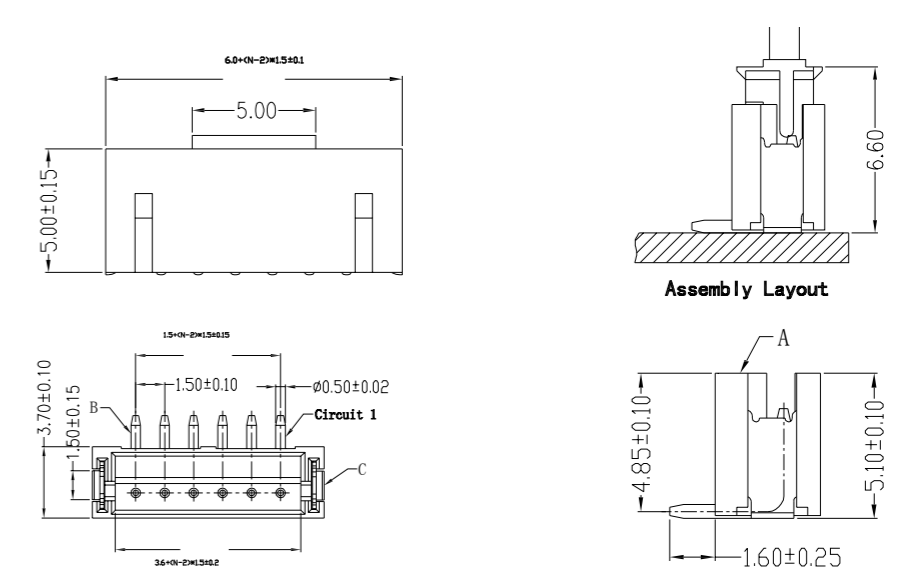
1.5 立贴特殊款
A1504AWV-xx



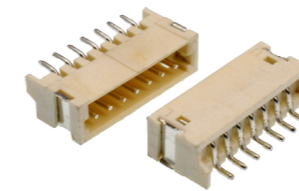
84



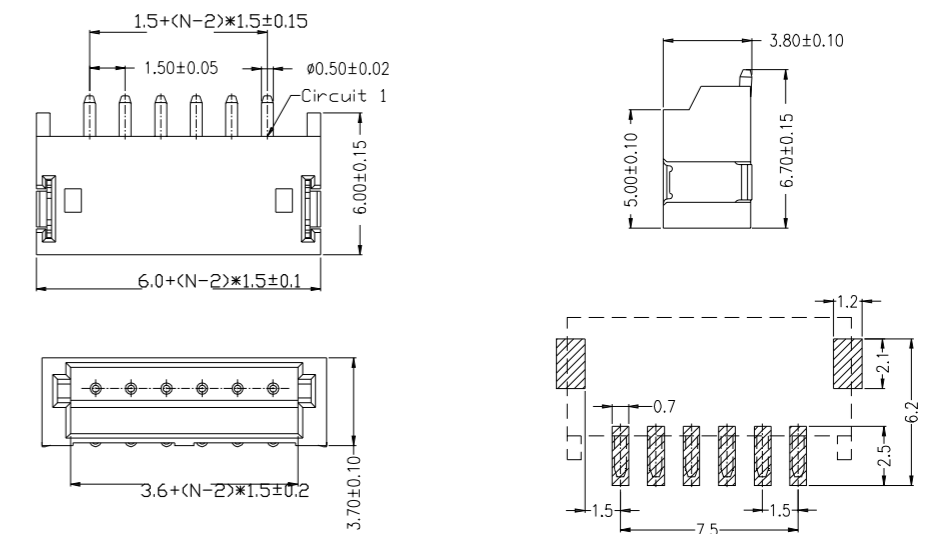
ZH1.5-nAB(立贴)
ZH1.5-nAB



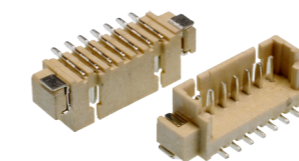
85



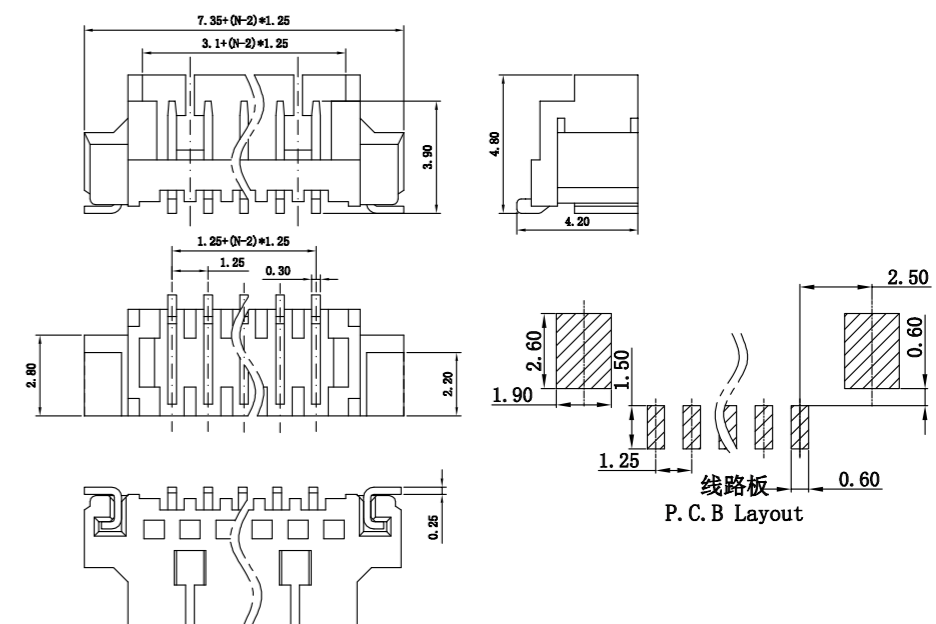
ZH1.5-nAWB(卧贴)
ZH1.5-nAB



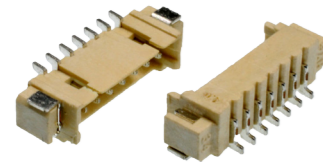
86



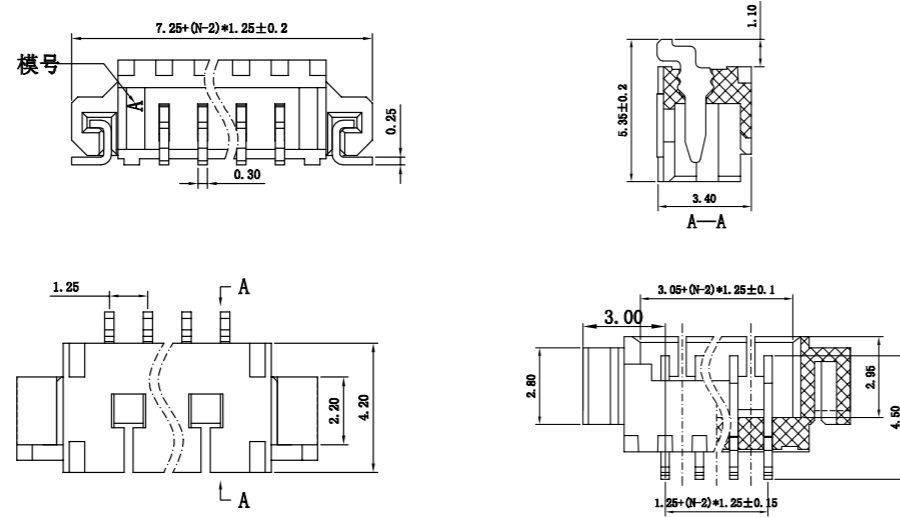
1.25 立贴
1.25-C-nPB



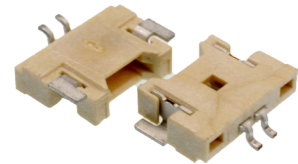
87



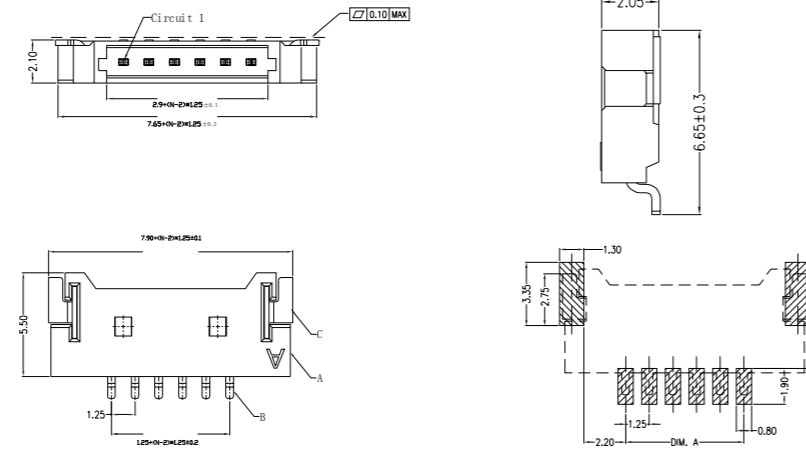
1.25 卧贴
1.25-D-nPWB(new)



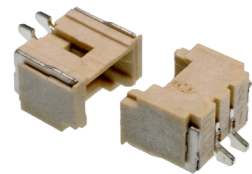
88



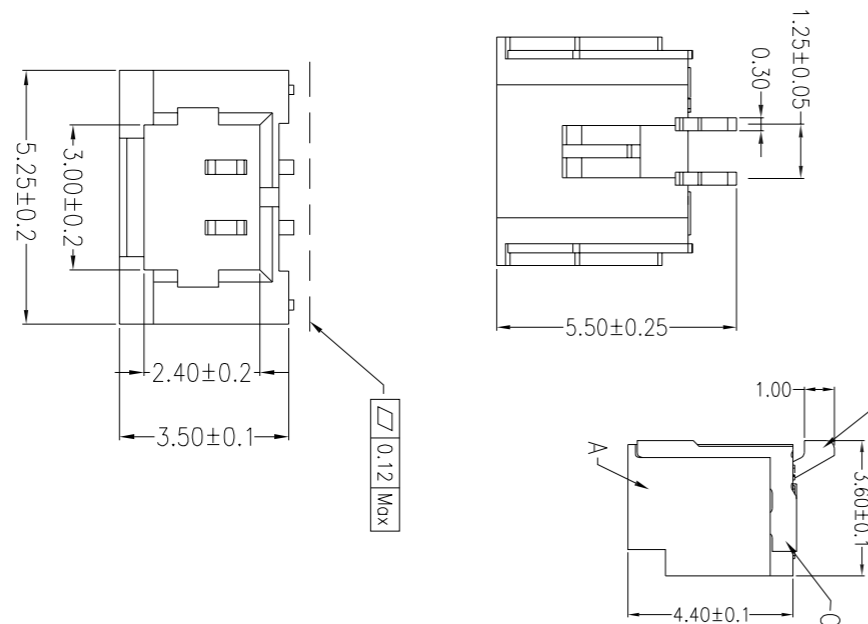
1.25 卧贴超薄
1.25T-CB-nPWB



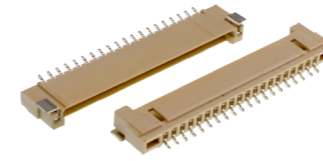
89



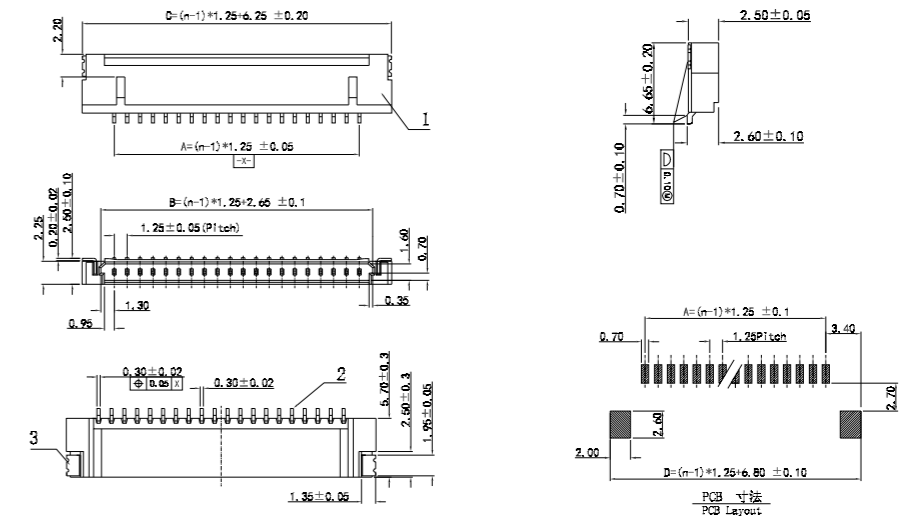
1.25 卧贴小焊片



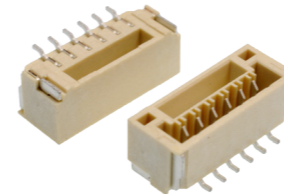
90



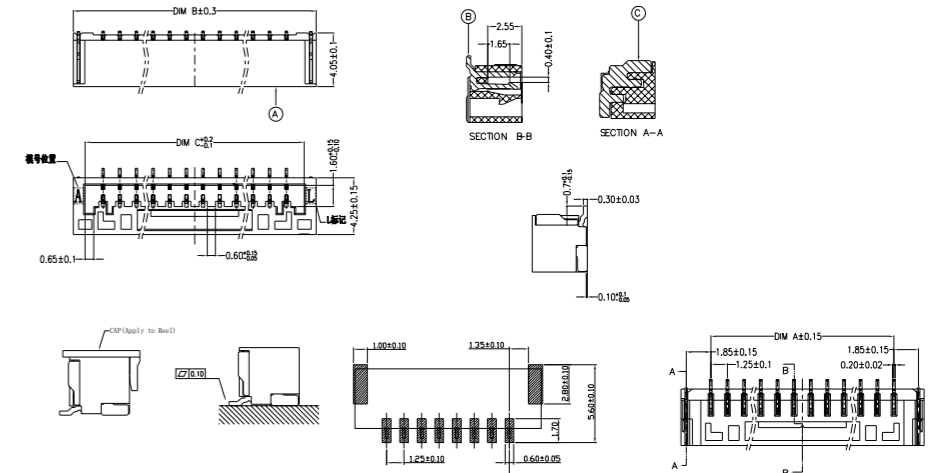
DF14-1.25 卧贴针座
A1253WRA-S-XP



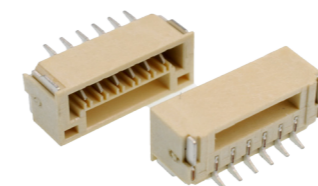
91



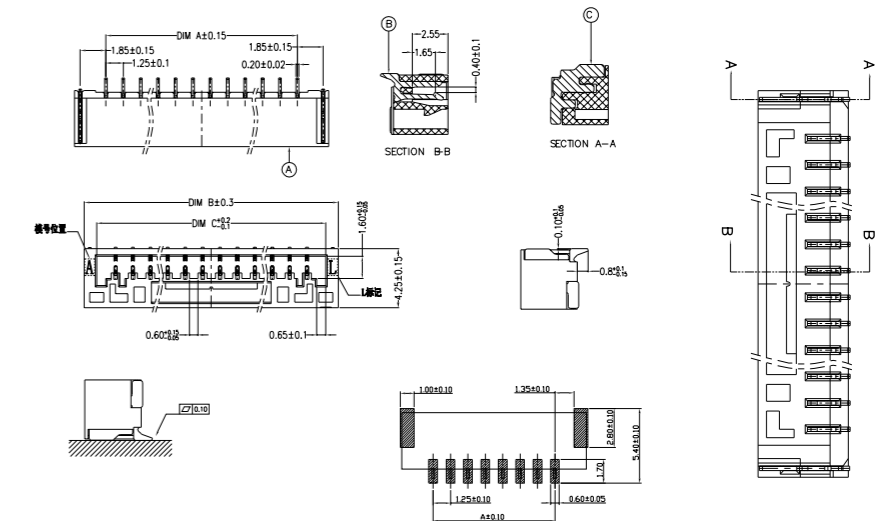
GH 1.25 立贴
GH1.25-nAB(立贴)



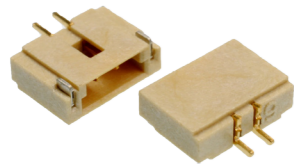
92



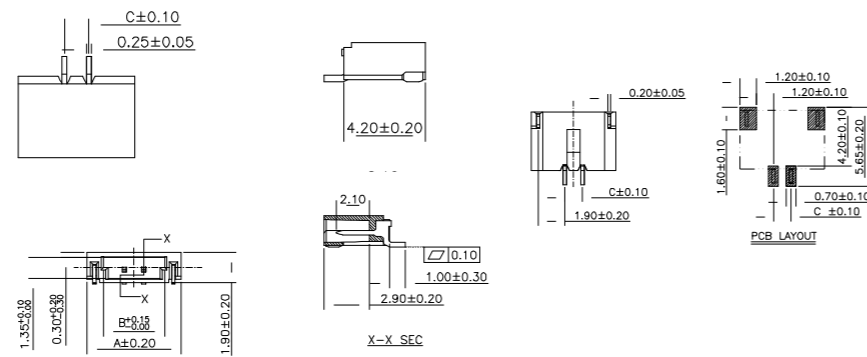
GH 1.25 卧贴
GH1.25-nPWB(卧贴)



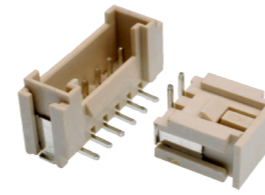
93



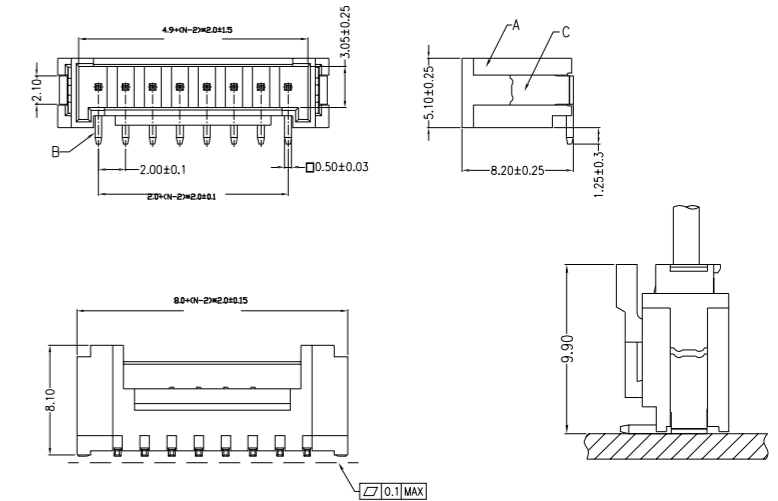
JAE1.25 卧贴针座
A1255WR-S-XP



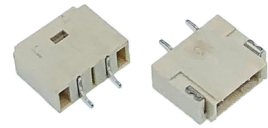
96



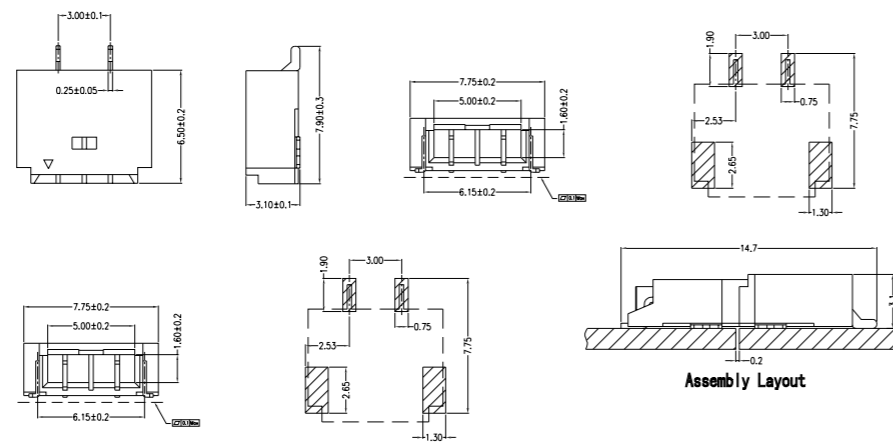
HY2.0 立贴
HY2.0-nAB(立贴)



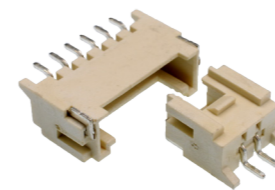
94



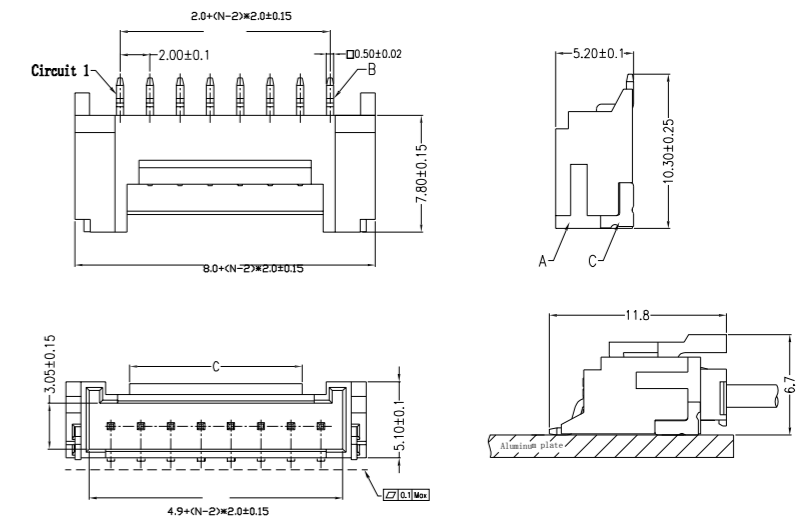
3.0-2P 卧贴对接插座母



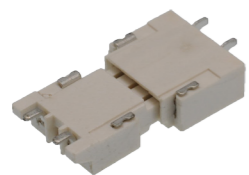
97



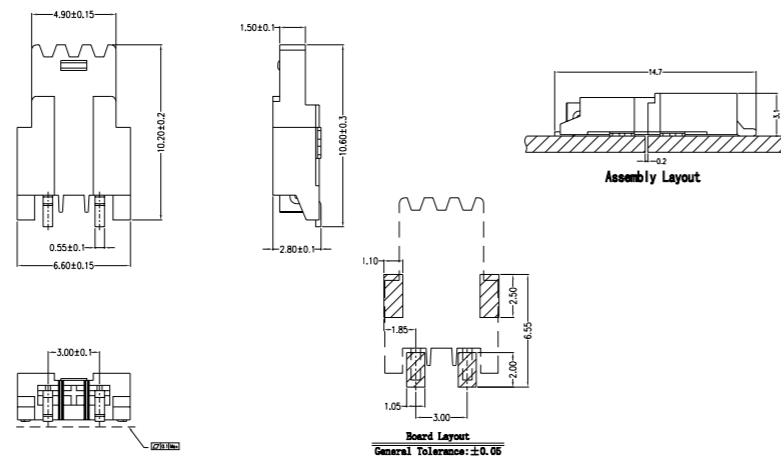
HY2.0 卧贴
HY2.0-nAWB(卧贴)



95



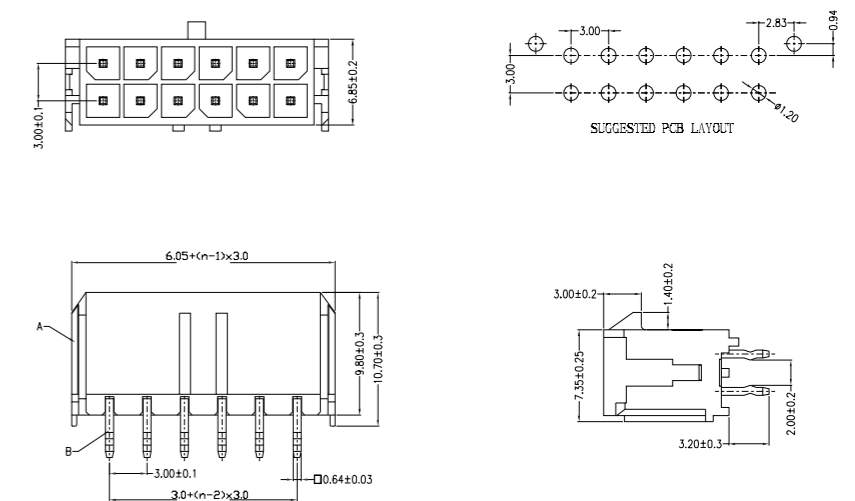
3.0 对接插座



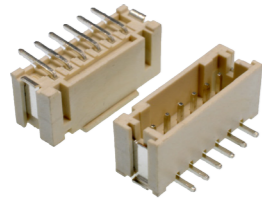
98



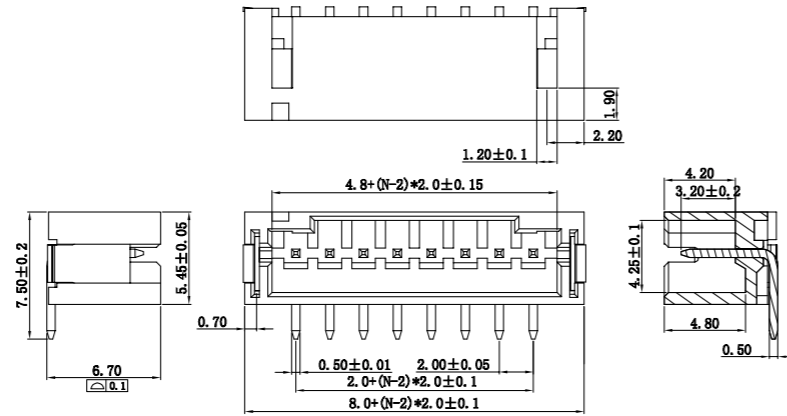
MX3.0 双排直插



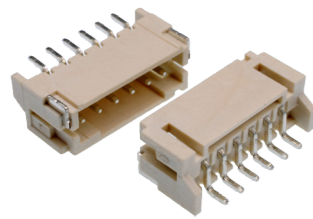
99



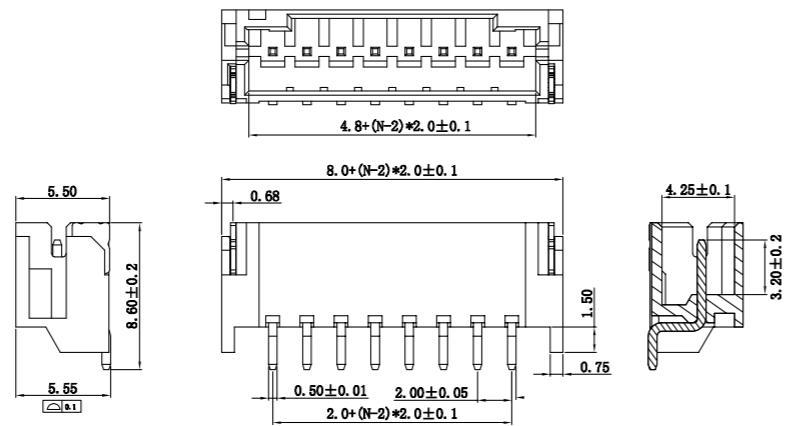
PH2.0 立贴
2.0-B-nPB



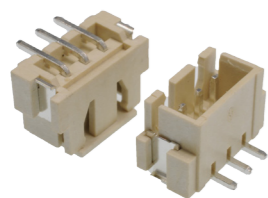
100



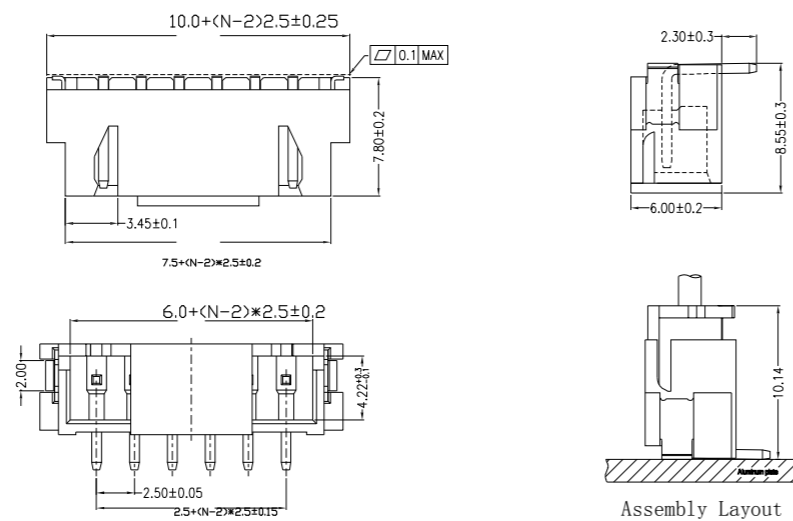
PH2.0 卧贴
2.0-A-nPWB



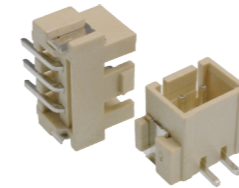
101



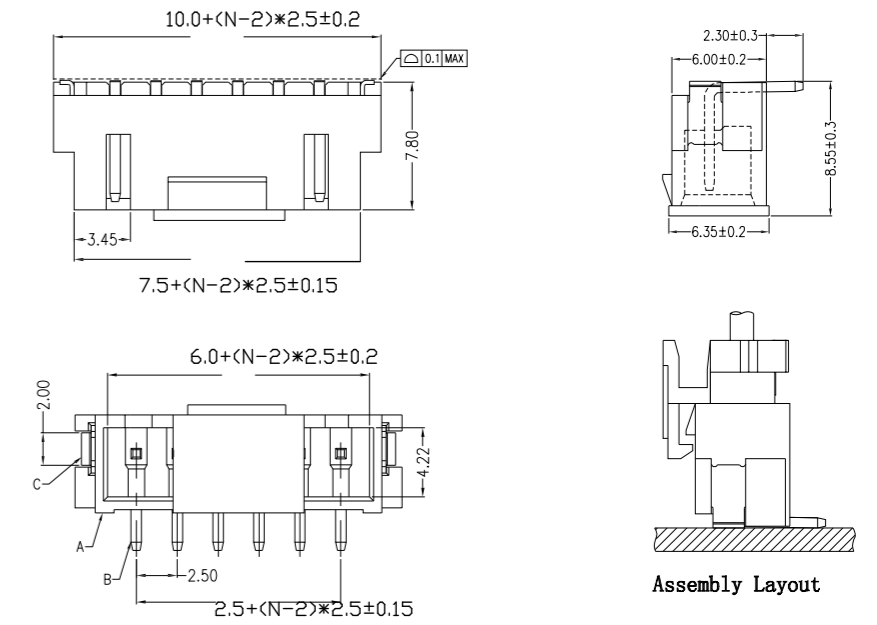
2.54 立贴
XH2.54-nAB



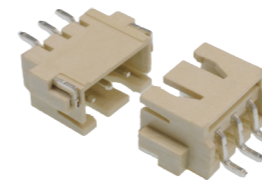
102



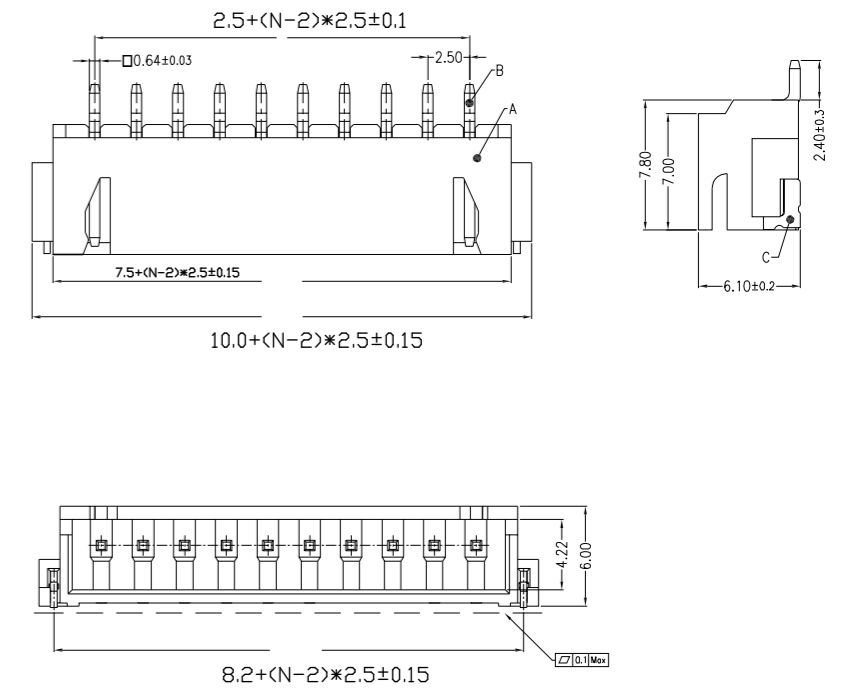
XH2.54 立贴带扣
XH2.54-nABK



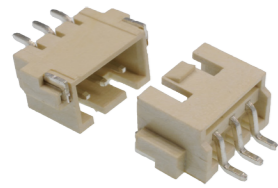
103



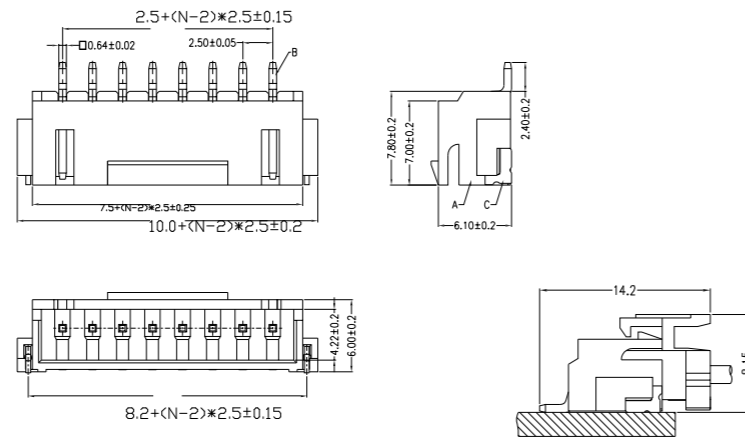
2.54 卧贴
XH2.54-nAWB



104



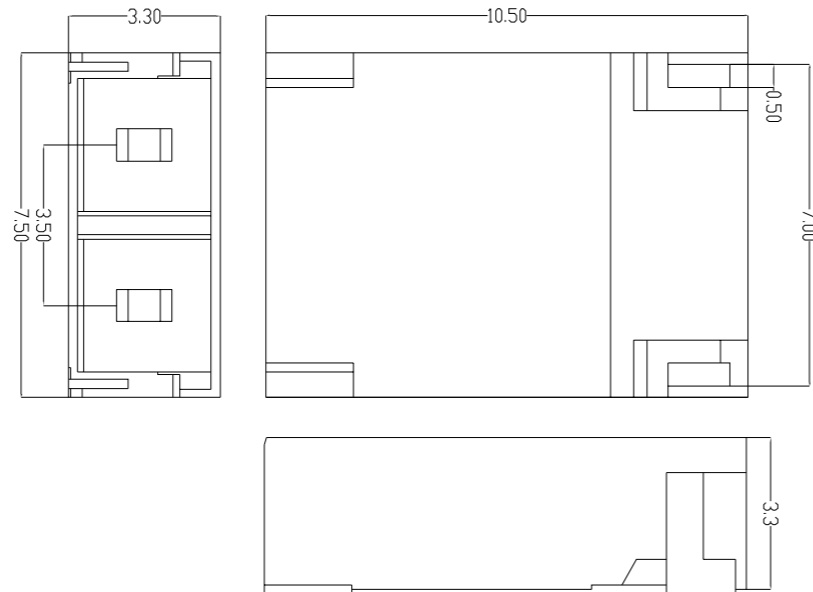
2.54 卧贴带扣
XH2.54-nAWBK



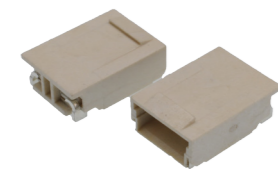
105



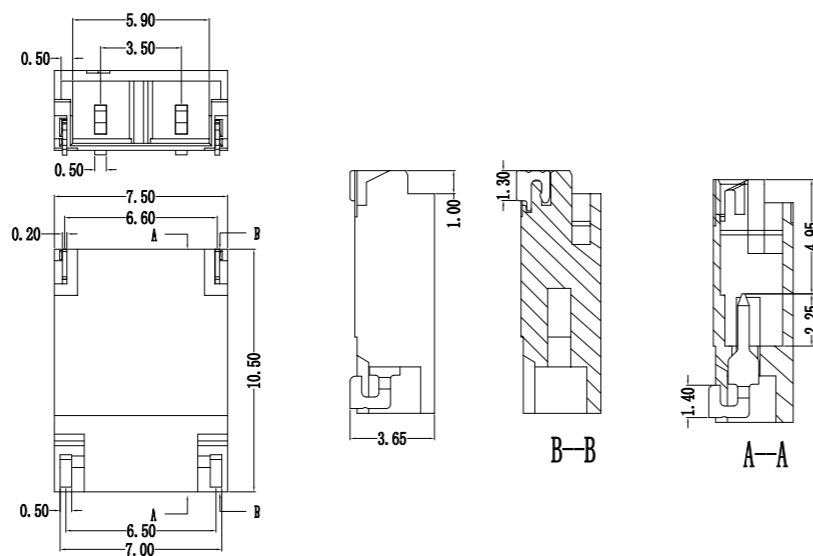
3.5-2P-9T 料



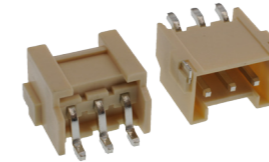
106



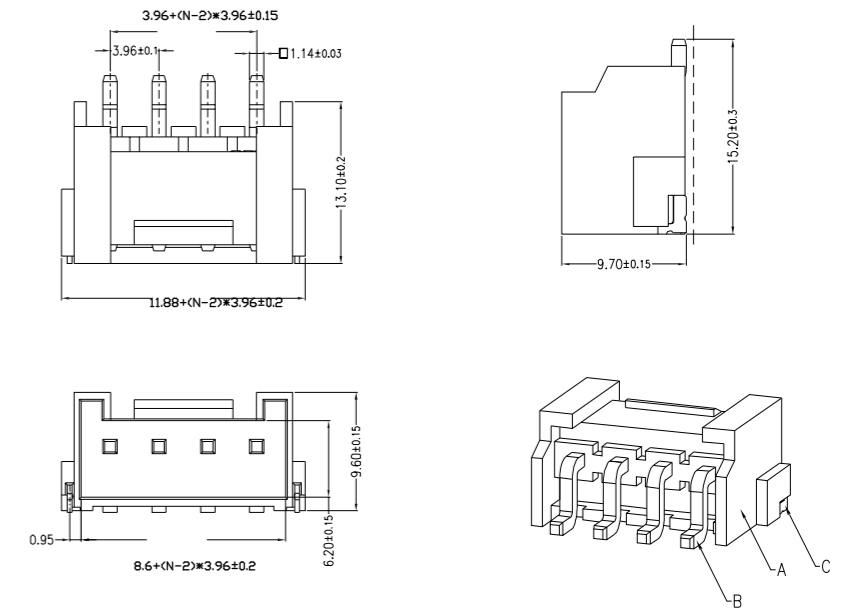
3.5-2P 带扣



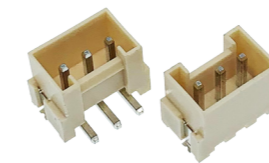
107



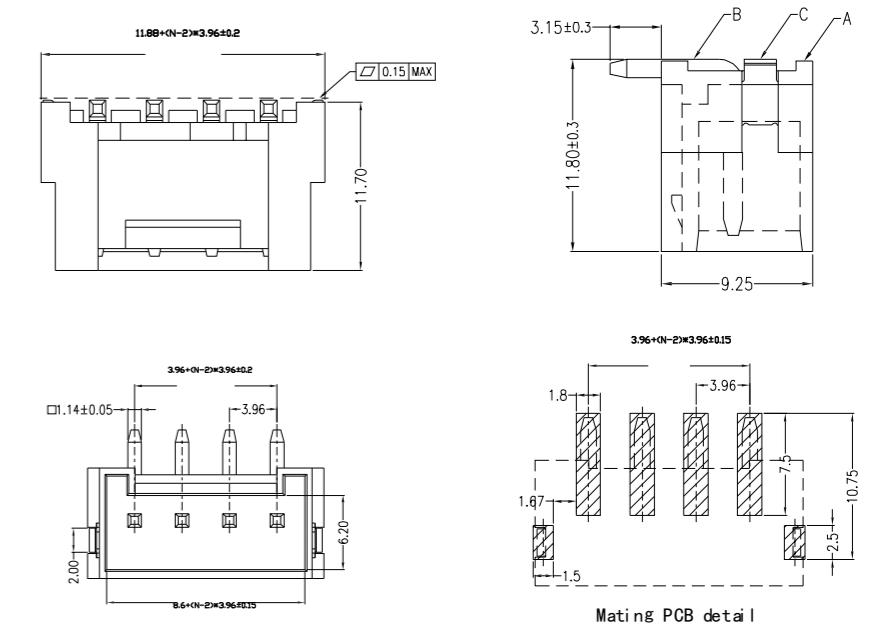
VH3.96 卧贴
VH3.96-nPWB



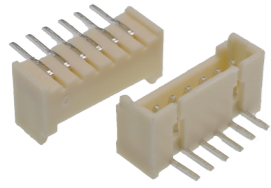
108



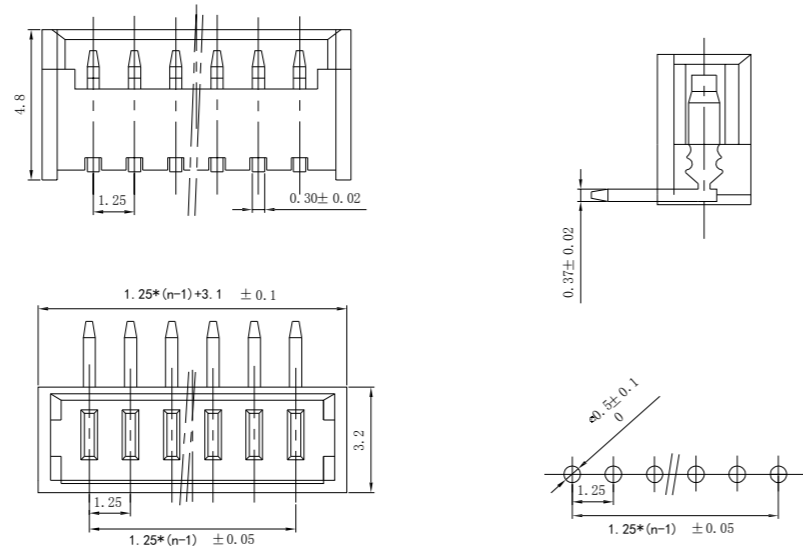
VH3.96 立贴
VH3.96-nPB



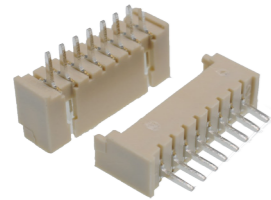
109



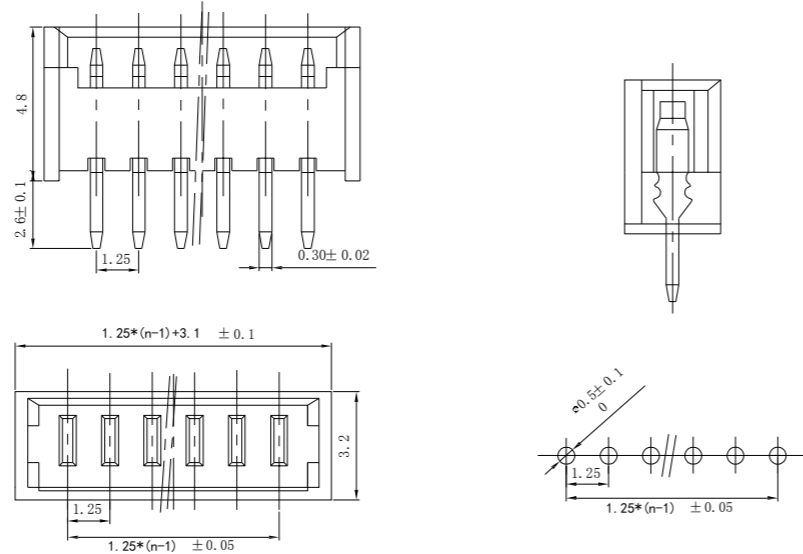
1.25 弯针



110



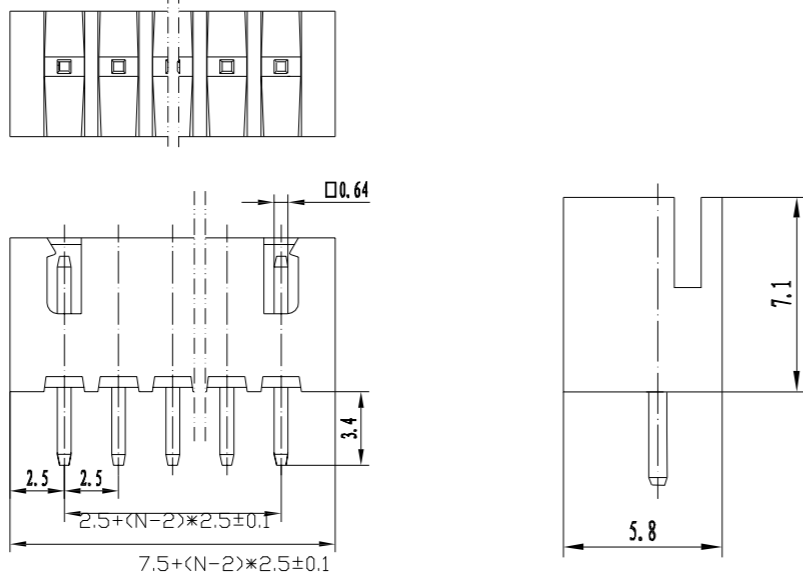
1.25 直针



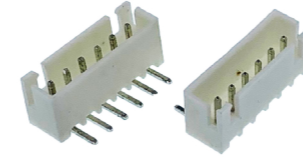
111



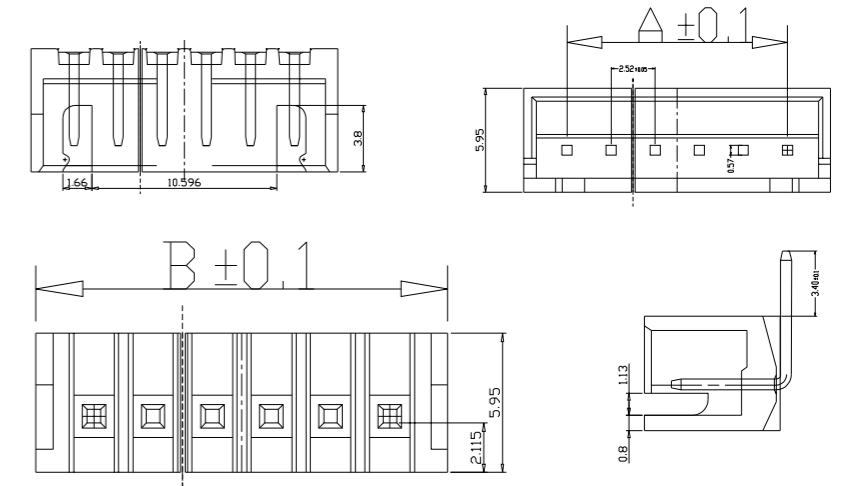
2.5 直针 立式



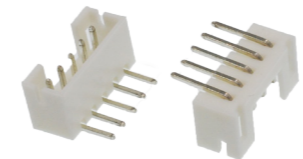
112



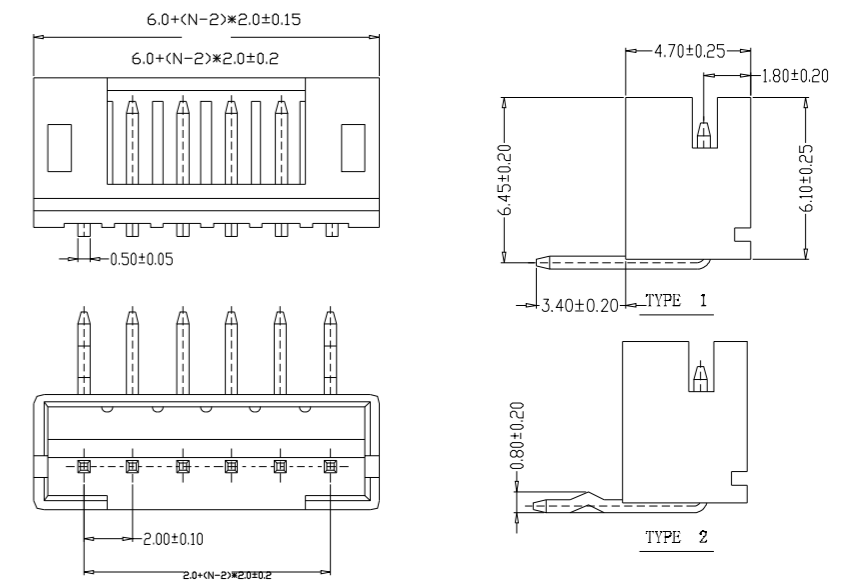
2.54XH-AW 弯针



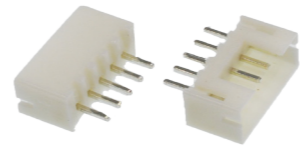
113



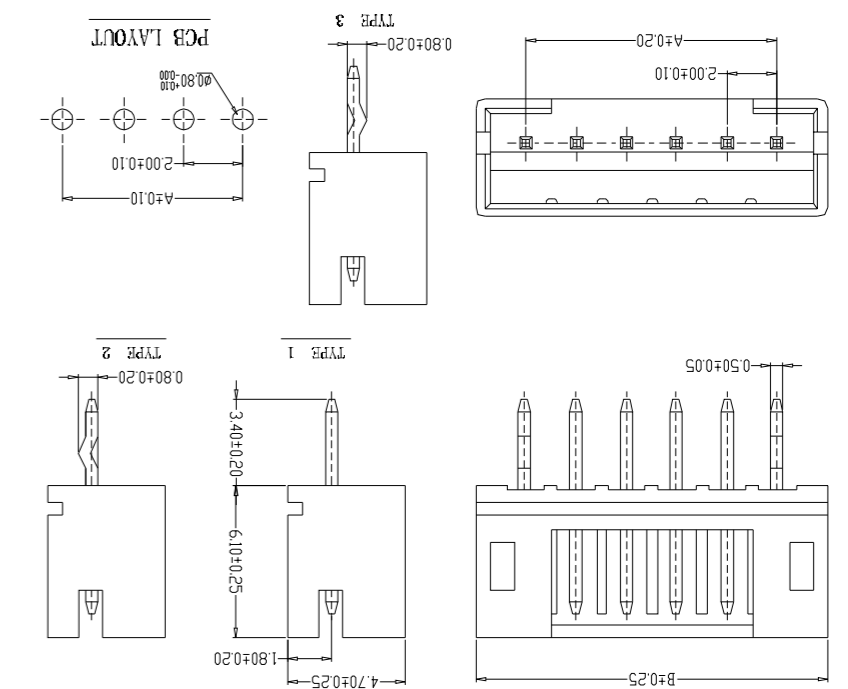
PH2.0 弯针 卧式



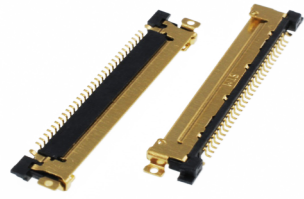
114



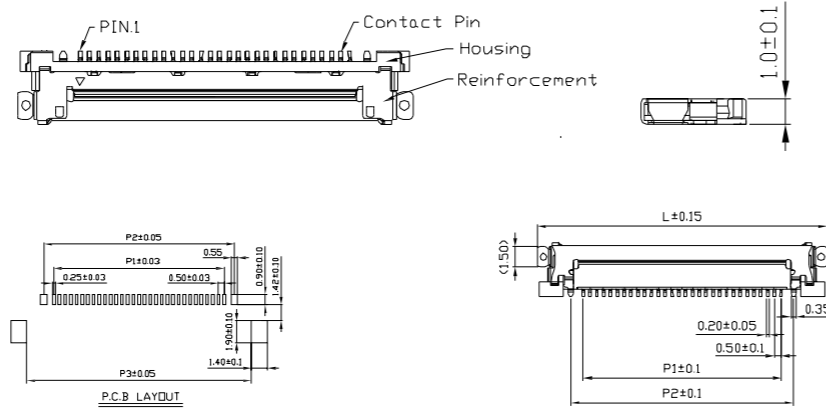
PH2.0 直针



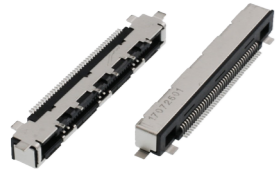
115



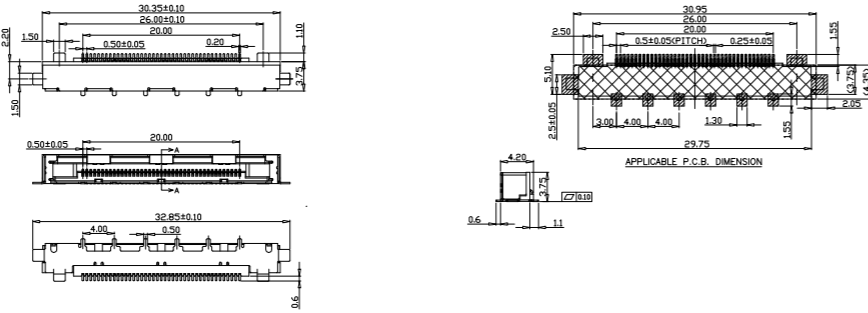
LVDS 0.5- 30 40P H=1.00



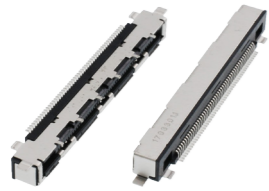
116



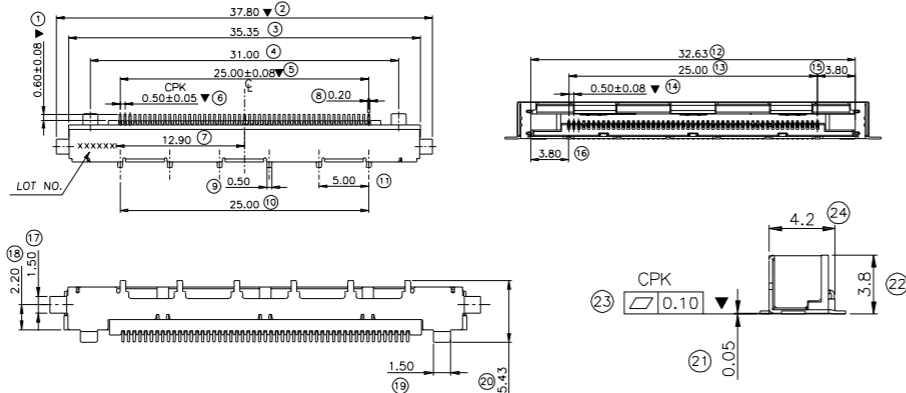
LVDS 0.5-41 贴板 H3.75



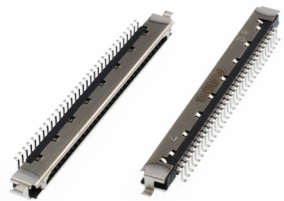
117



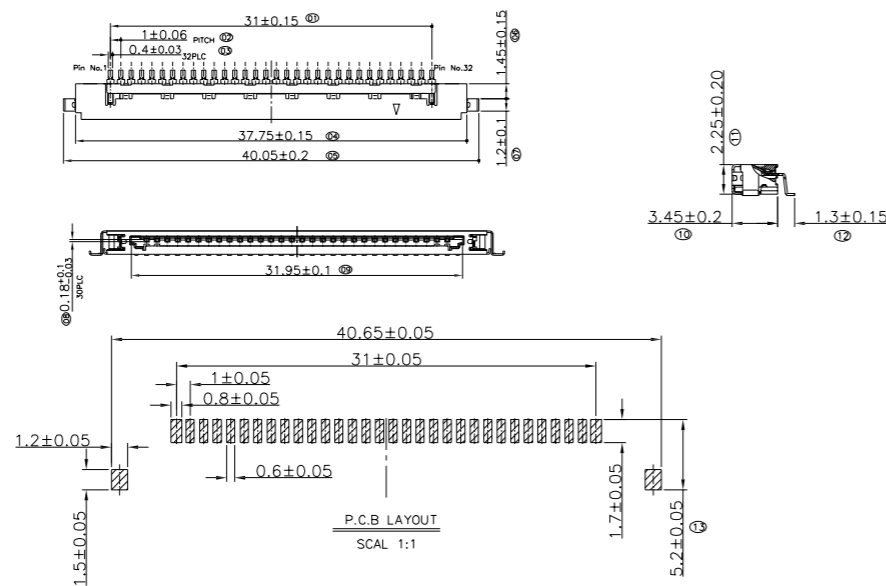
LVDS 0.5-51P 贴板 H3.75



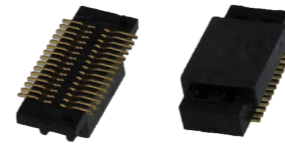
118



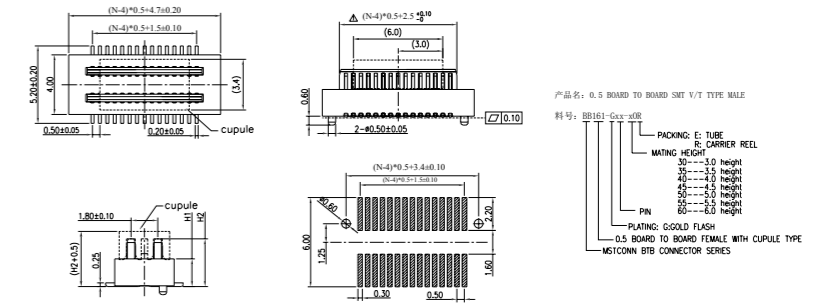
LVDS 1.0-30P 板上 H2.3



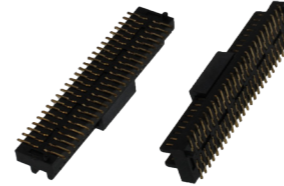
119



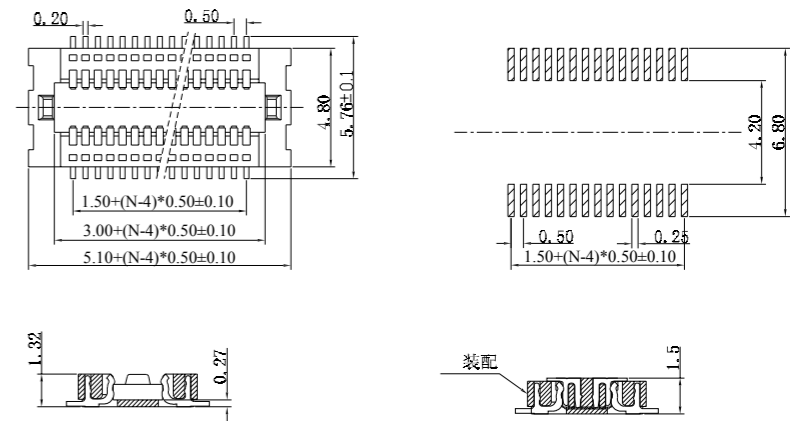
0.5 双槽 BTB 黑色



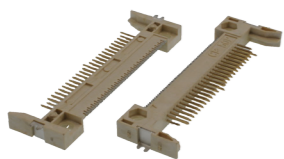
120



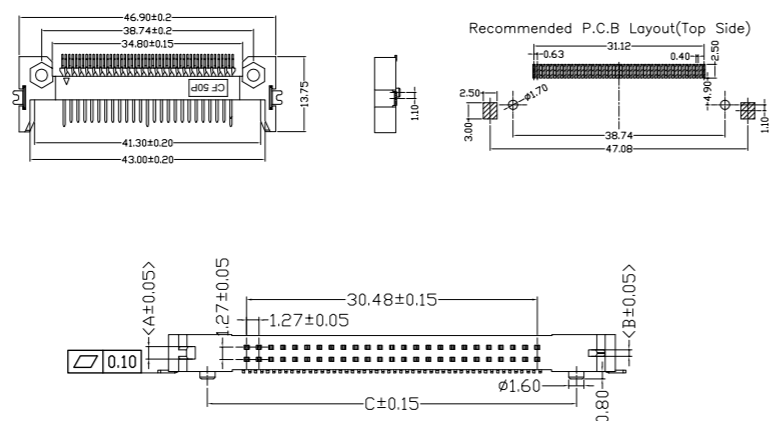
不带柱母座图 1.5H



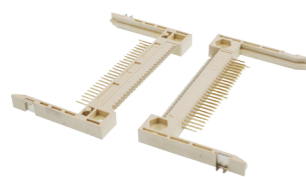
121



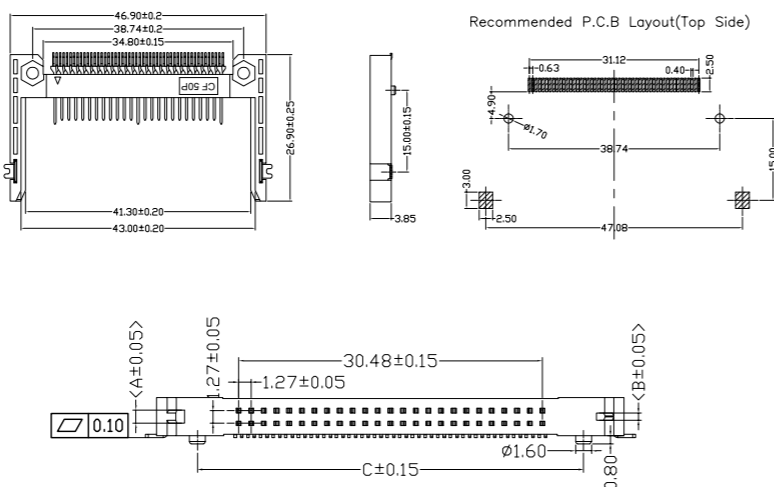
CF 短臂 13.75



122



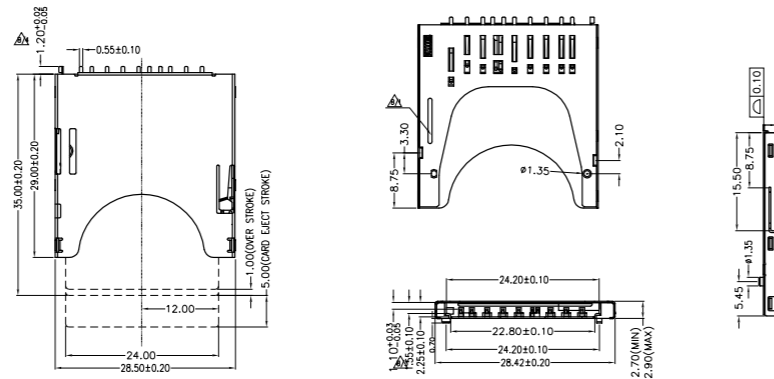
CF 长臂 26.9



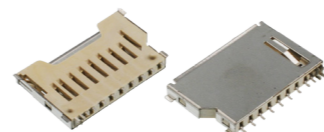
123



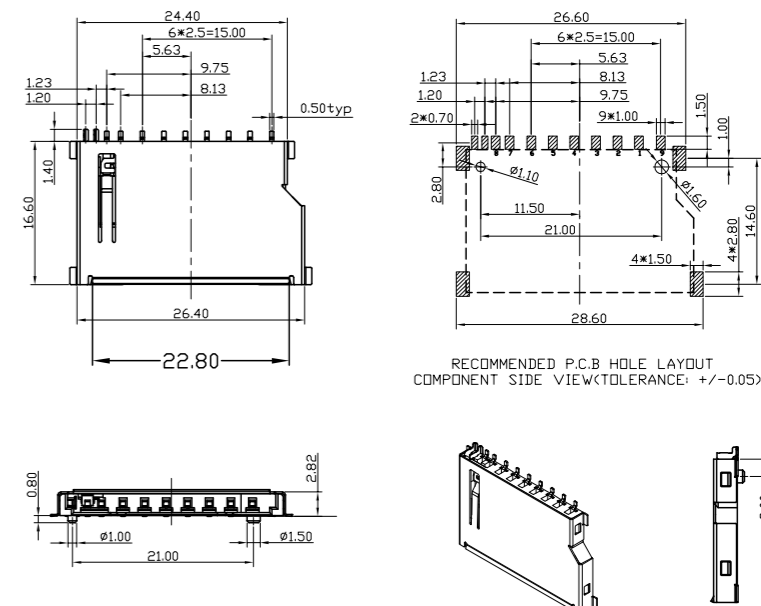
SD-PUSH 卡座



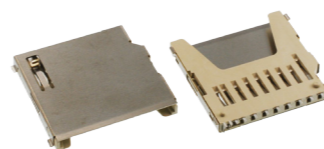
124



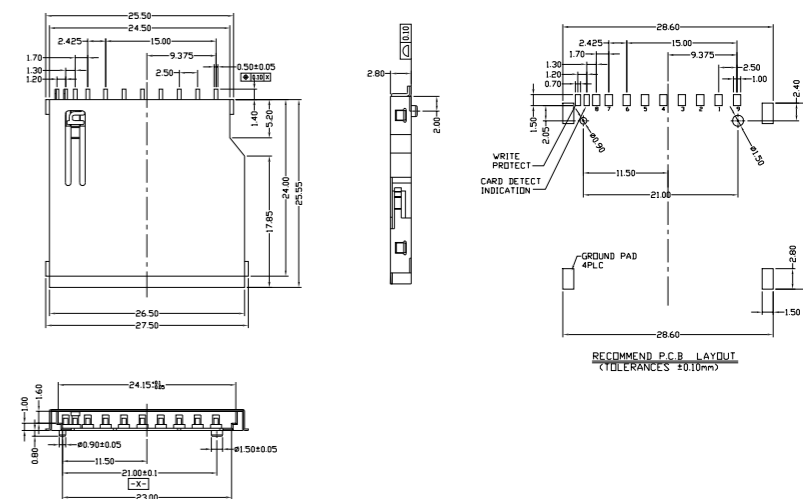
SD 简易短卡



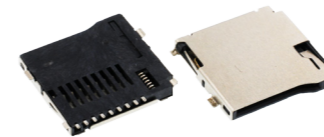
125



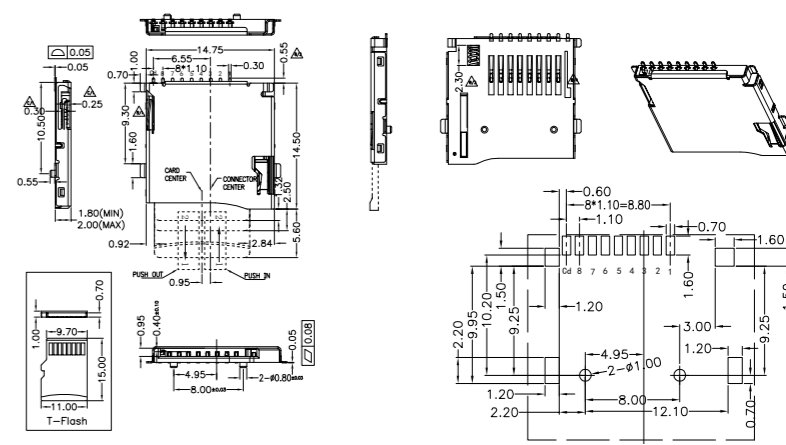
SD 简易长卡



126



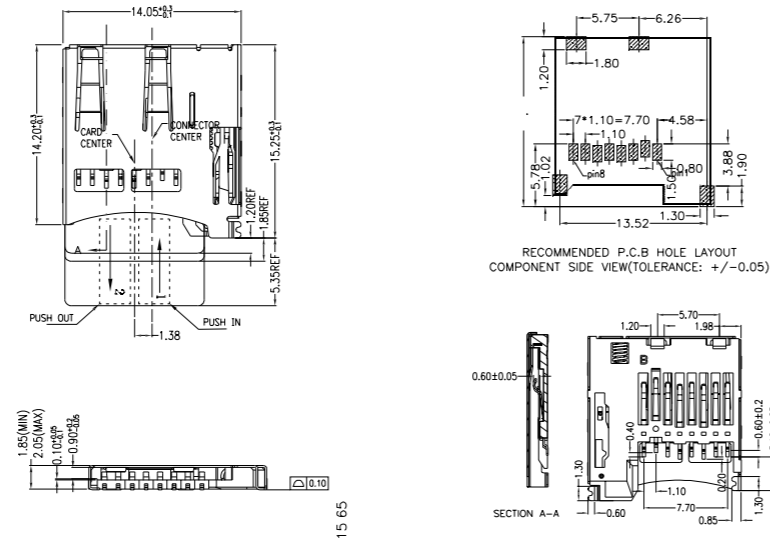
T-FLASH 外焊 PUSH



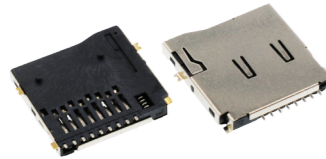
127



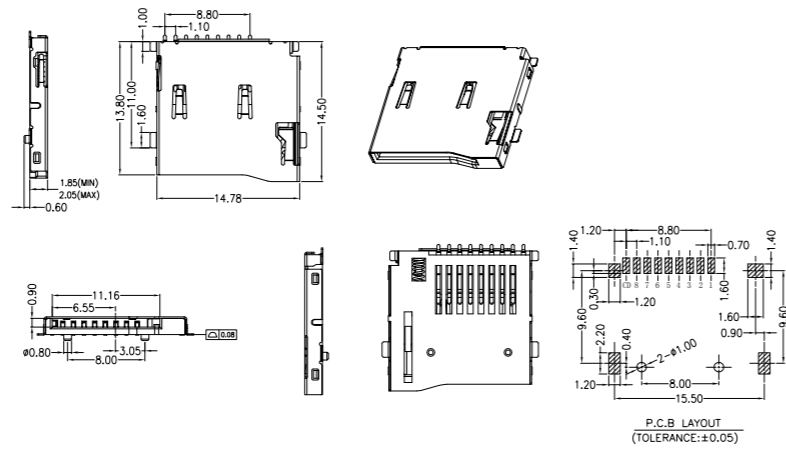
TF 内焊 B 版



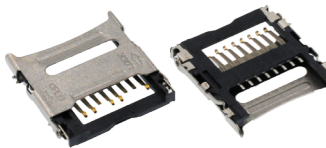
128



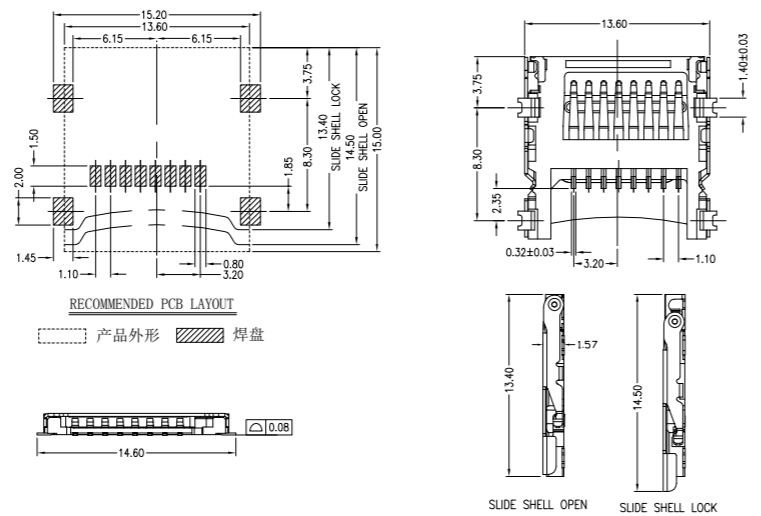
TF 外焊自弹卡座双压片



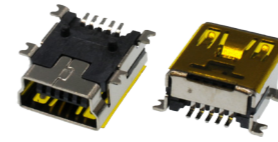
129



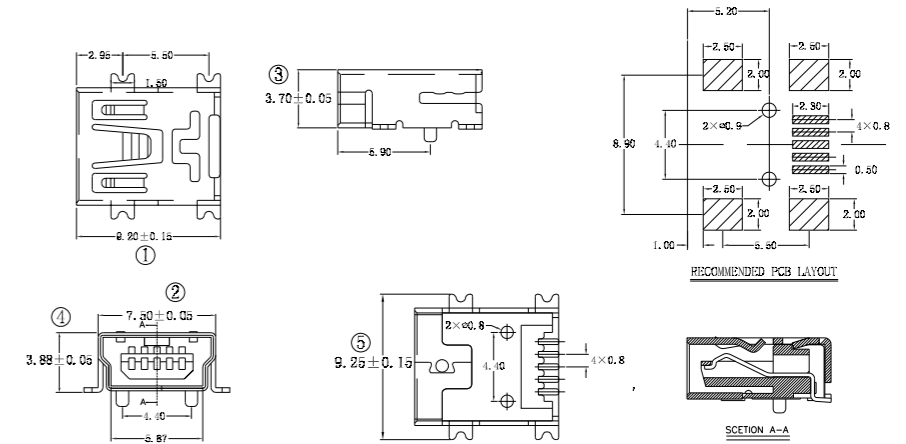
TF 掀盖 H1.6/H1.8



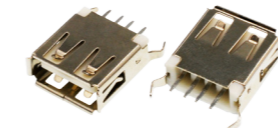
130



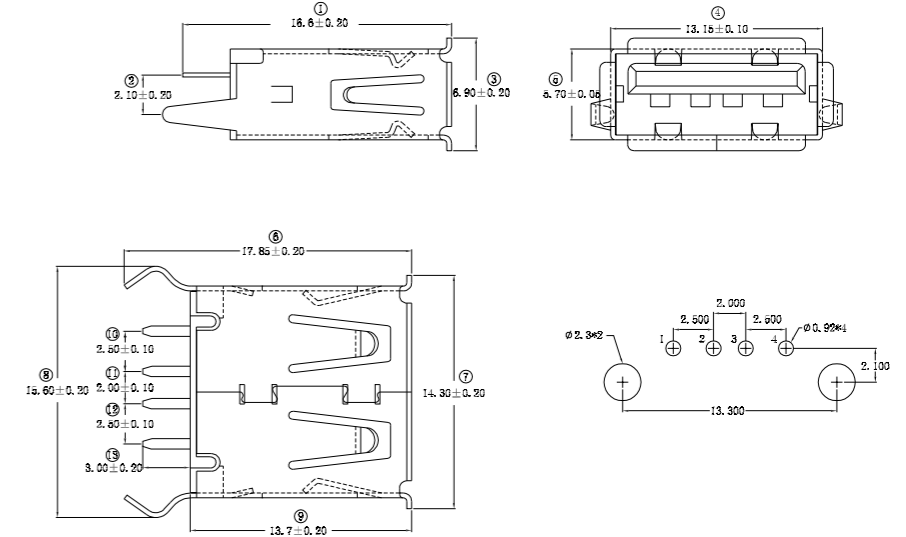
MINI USB 5P 母



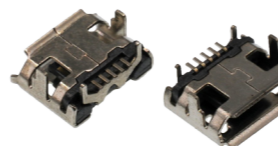
131



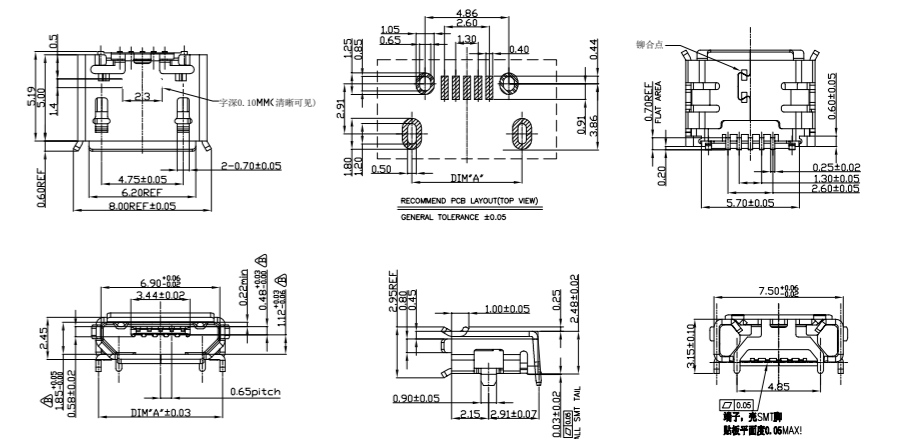
USB AF 180 度 DIP 13.7 弯脚



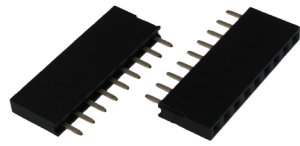
132



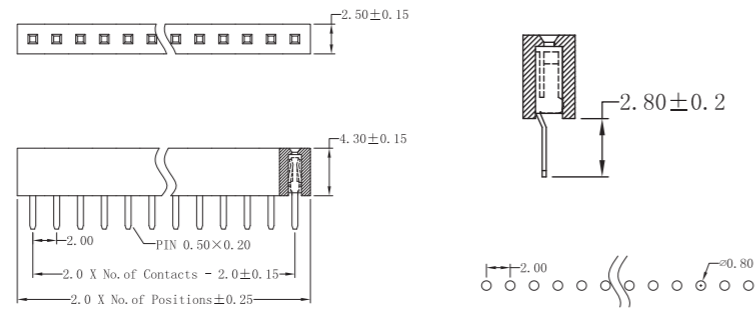
内插牛角有边



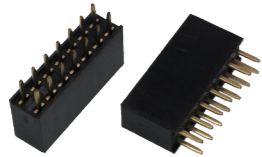
133



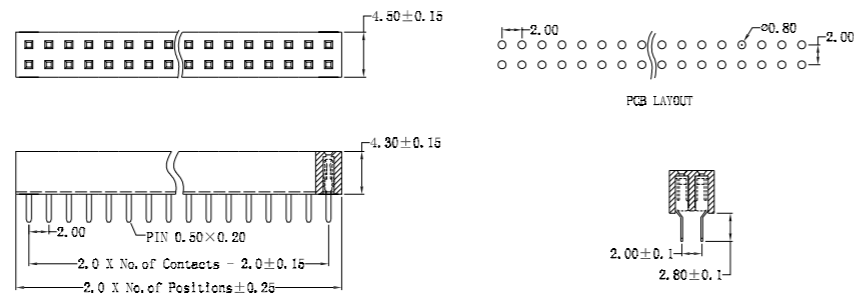
2.0 单排直母 H=4.3



134



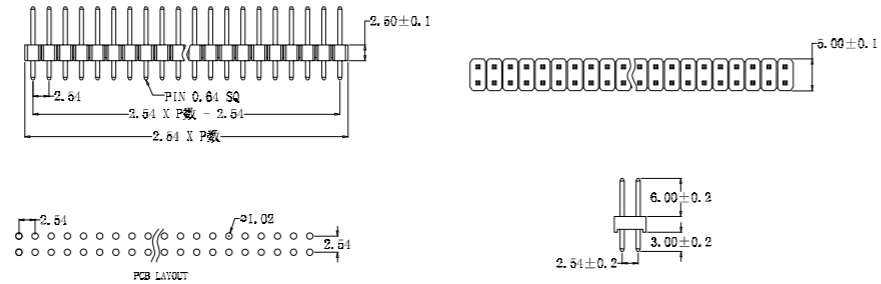
2.0 双排排母 H=4.3



135



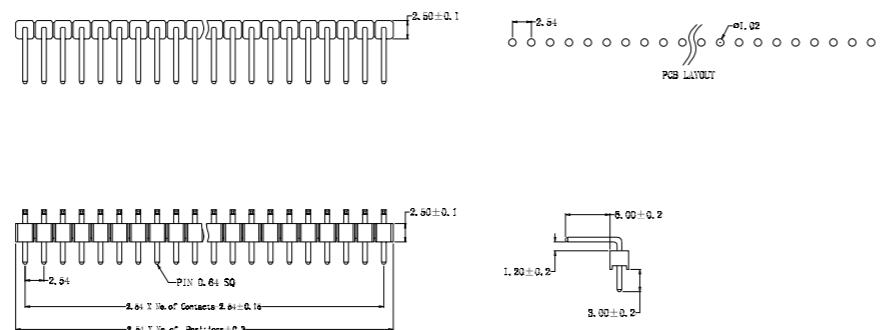
2.54 双排直针



136



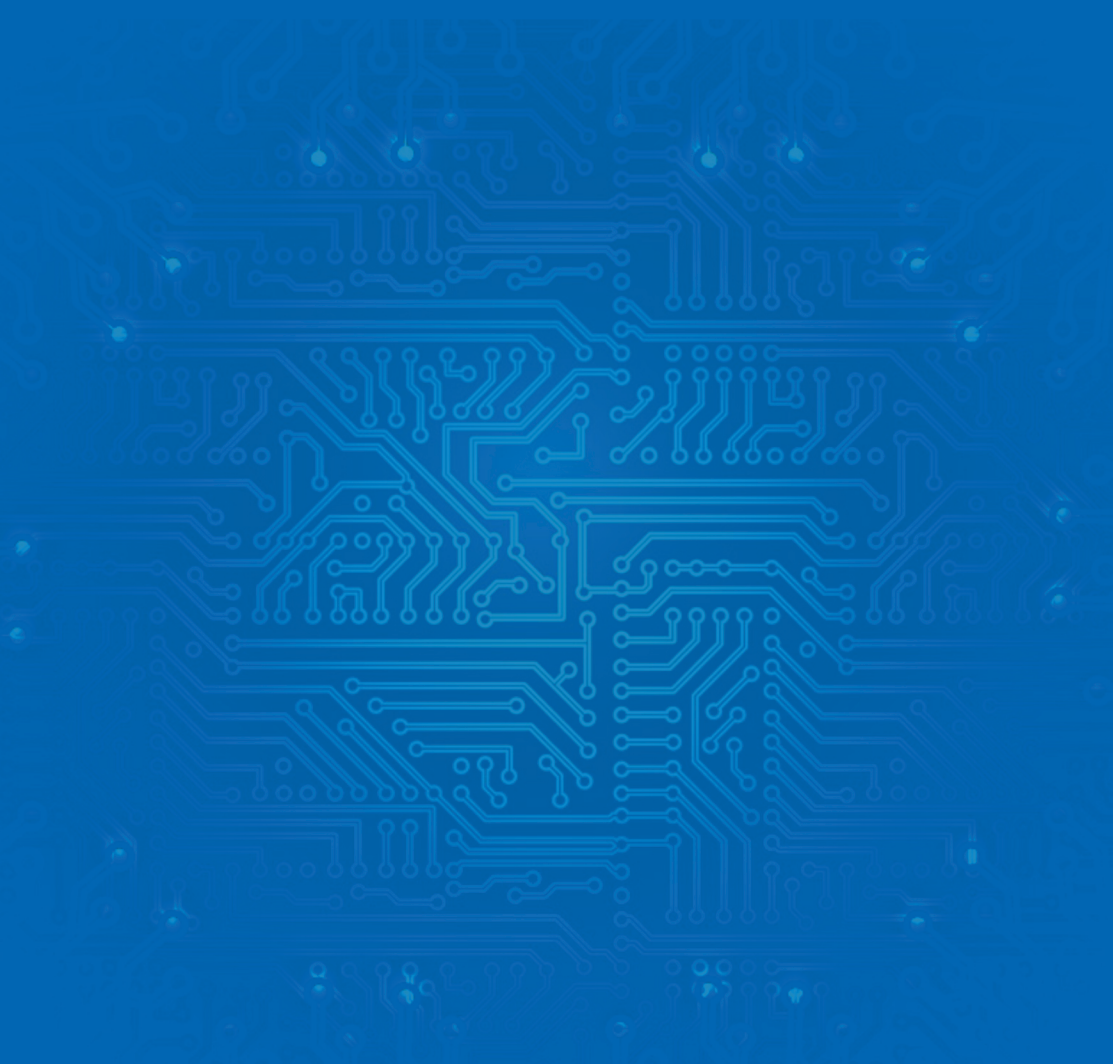
2.54 单排弯针



因为专业 所以做的更好

比质量, 比价格, 比服务, 您的满意我的追求
将以最优的价格, 最真诚的心, 最好的服务送给您最愉快的合作





广东国连电子有限公司
深圳市德瑞电子有限公司
深圳市启崴源电子有限公司

办公地址：深圳市宝安区松岗街道满京华盈硕大厦1202室

工厂地址：广东省东莞市大朗犀牛陂大冚二区三街19号

电话：0755-82566888

直线：13728786785